

Datasheet for ABIN7299690
anti-AGBL2 antibody (C-Term)[Go to Product page](#)

2 Images

Overview

| | |
|----------------------|---|
| Quantity: | 100 µL |
| Target: | AGBL2 |
| Binding Specificity: | C-Term |
| Reactivity: | Human, Mouse, Monkey |
| Host: | Rabbit |
| Clonality: | Polyclonal |
| Conjugate: | This AGBL2 antibody is un-conjugated |
| Application: | Western Blotting (WB), Immunohistochemistry (IHC) |

Product Details

| | |
|------------------|--|
| Immunogen: | KLH-conjugated synthetic peptide encompassing a sequence within the C-term region of human CCP2. |
| Specificity: | Recognizes endogenous levels of CCP2 protein. |
| Characteristics: | Rabbit polyclonal antibody to CCP2 |
| Purification: | The antibody was purified by immunogen affinity chromatography. |

Target Details

| | |
|-------------------|--|
| Target: | AGBL2 |
| Alternative Name: | CCP2 (AGBL2 Products) |
| Background: | CCP2, Cytosolic carboxypeptidase 2, ATP/GTP-binding protein-like 2 |

Target Details

| | |
|----------|---|
| Gene ID: | 79841, 271813 |
| UniProt: | Q5U5Z8 , Q8CDK2 |

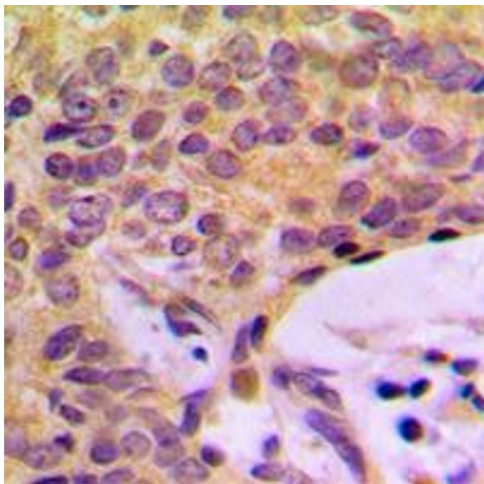
Application Details

| | |
|--------------------|---|
| Application Notes: | WB (1:500 - 1:1000), IH (1:100 - 1:200) |
| Restrictions: | For Research Use only |

Handling

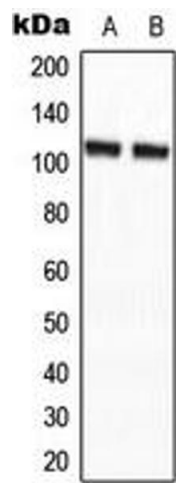
| | |
|--------------------|--|
| Format: | Liquid |
| Buffer: | Liquid in 0.42 % Potassium phosphate, 0.87 % Sodium chloride, pH 7.3, 30 % glycerol, and 0.01 % sodium azide. |
| Preservative: | Sodium azide |
| Precaution of Use: | This product contains Sodium azide: a POISONOUS AND HAZARDOUS SUBSTANCE which should be handled by trained staff only. |
| Storage: | -20 °C |
| Storage Comment: | Shipped at 4°C. Upon delivery aliquot and store at -20°C for one year. Avoid freeze/thaw cycles. |
| Expiry Date: | 12 months |

Images



Immunohistochemistry

Image 1. Immunohistochemical analysis of CCP2 staining in human breast cancer formalin fixed paraffin embedded tissue section. The section was pre-treated using heat mediated antigen retrieval with sodium citrate buffer (pH 6.0). The section was then incubated with the antibody at room temperature and detected using an HRP conjugated compact polymer system. DAB was used as the chromogen. The section was then counterstained with haematoxylin and mounted with DPX.



Western Blotting

Image 2. Western blot analysis of CCP2 expression in HepG2 (A), NIH3T3 (B) whole cell lysates.