

Datasheet for ABIN7299718  
**anti-BTF3L4 antibody (Center)**

## 2 Images

[Go to Product page](#)

## Overview

Quantity:	100 µL
Target:	BTF3L4
Binding Specificity:	Center
Reactivity:	Human, Mouse, Cow, Rat, Zebrafish (Danio rerio), Chicken
Host:	Rabbit
Clonality:	Polyclonal
Conjugate:	This BTF3L4 antibody is un-conjugated
Application:	Western Blotting (WB), Immunohistochemistry (IHC)

## Product Details

Immunogen:	KLH-conjugated synthetic peptide encompassing a sequence within the center region of human BTF3L4.
Specificity:	Recognizes endogenous levels of BTF3L4 protein.
Characteristics:	Rabbit polyclonal antibody to BTF3L4
Purification:	The antibody was purified by immunogen affinity chromatography.

## Target Details

Target:	BTF3L4
Alternative Name:	BTF3L4 ( <a href="#">BTF3L4 Products</a> )
Background:	Transcription factor BTF3 homolog 4, Basic transcription factor 3-like 4

## Target Details

Gene ID:	91408, 70533
UniProt:	<a href="#">Q96K17</a> , <a href="#">Q9CQH7</a>

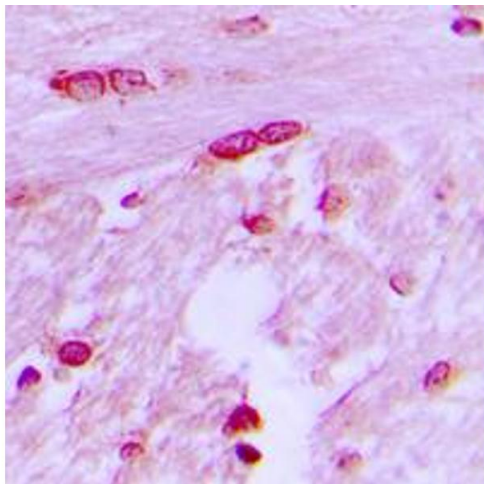
## Application Details

Application Notes:	WB (1:500 - 1:1000), IH (1:100 - 1:200)
Restrictions:	For Research Use only

## Handling

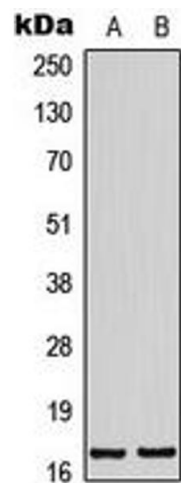
Format:	Liquid
Buffer:	Liquid in 0.42 % Potassium phosphate, 0.87 % Sodium chloride, pH 7.3, 30 % glycerol, and 0.01 % sodium azide.
Preservative:	Sodium azide
Precaution of Use:	This product contains Sodium azide: a POISONOUS AND HAZARDOUS SUBSTANCE which should be handled by trained staff only.
Storage:	-20 °C
Storage Comment:	Shipped at 4°C. Upon delivery aliquot and store at -20°C for one year. Avoid freeze/thaw cycles.
Expiry Date:	12 months

## Images



### Immunohistochemistry

**Image 1.** Immunohistochemical analysis of BTF3L4 staining in human brain formalin fixed paraffin embedded tissue section. The section was pre-treated using heat mediated antigen retrieval with sodium citrate buffer (pH 6.0). The section was then incubated with the antibody at room temperature and detected using an HRP conjugated compact polymer system. DAB was used as the chromogen. The section was then counterstained with haematoxylin and mounted with DPX.



Western Blotting

**Image 2.** Western blot analysis of BTF3L4 expression in K562 (A), NIH3T3 (B) whole cell lysates.