

Datasheet for ABIN7299722
anti-CEP41 antibody (Center)

2 Images

[Go to Product page](#)

Overview

Quantity:	100 µL
Target:	CEP41
Binding Specificity:	Center
Reactivity:	Human, Rat, Mouse
Host:	Rabbit
Clonality:	Polyclonal
Conjugate:	This CEP41 antibody is un-conjugated
Application:	Immunohistochemistry (IHC), Western Blotting (WB)

Product Details

Immunogen:	KLH-conjugated synthetic peptide encompassing a sequence within the center region of human CEP41.
Specificity:	Recognizes endogenous levels of CEP41 protein.
Characteristics:	Rabbit polyclonal antibody to CEP41
Purification:	The antibody was purified by immunogen affinity chromatography.

Target Details

Target:	CEP41
Alternative Name:	CEP41 (CEP41 Products)
Background:	TSGA14, Centrosomal protein of 41 kDa, Cep41, Testis-specific gene A14 protein

Target Details

Gene ID:	95681, 83922, 500069
UniProt:	Q9BYV8 , Q99NF3 , Q4KM37
Pathways:	M Phase

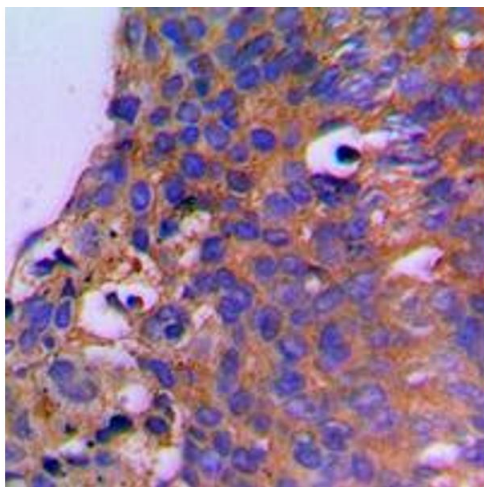
Application Details

Application Notes:	WB (1:500 - 1:1000), IH (1:100 - 1:200)
Restrictions:	For Research Use only

Handling

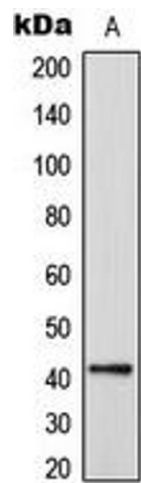
Format:	Liquid
Buffer:	Liquid in 0.42 % Potassium phosphate, 0.87 % Sodium chloride, pH 7.3, 30 % glycerol, and 0.01 % sodium azide.
Preservative:	Sodium azide
Precaution of Use:	This product contains Sodium azide: a POISONOUS AND HAZARDOUS SUBSTANCE which should be handled by trained staff only.
Storage:	-20 °C
Storage Comment:	Shipped at 4°C. Upon delivery aliquot and store at -20°C for one year. Avoid freeze/thaw cycles.
Expiry Date:	12 months

Images



Immunohistochemistry

Image 1. Immunohistochemical analysis of CEP41 staining in human breast cancer formalin fixed paraffin embedded tissue section. The section was pre-treated using heat mediated antigen retrieval with sodium citrate buffer (pH 6.0). The section was then incubated with the antibody at room temperature and detected using an HRP conjugated compact polymer system. DAB was used as the chromogen. The section was then counterstained with haematoxylin and mounted with DPX.



Western Blotting

Image 2. Western blot analysis of CEP41 expression in HeLa (A) whole cell lysates.