

Datasheet for ABIN7299752
anti-EEF2K antibody (pSer366)[Go to Product page](#)

2 Images

Overview

Quantity:	100 µL
Target:	EEF2K
Binding Specificity:	pSer366
Reactivity:	Human, Rat, Monkey
Host:	Rabbit
Clonality:	Polyclonal
Conjugate:	This EEF2K antibody is un-conjugated
Application:	Western Blotting (WB), Immunohistochemistry (IHC)

Product Details

Immunogen:	KLH-conjugated synthetic peptide encompassing a sequence within the center region of human EEF2K.
Specificity:	Recognizes endogenous levels of EEF2K (pS366) protein.
Characteristics:	Rabbit polyclonal antibody to EEF2K (pS366)
Purification:	The antibody was purified by immunogen affinity chromatography.

Target Details

Target:	EEF2K
Alternative Name:	EEF2K (EEF2K Products)
Background:	Eukaryotic elongation factor 2 kinase, eEF-2 kinase, eEF-2K, Calcium/calmodulin-dependent

Target Details

	eukaryotic elongation factor 2 kinase
Gene ID:	101930123, 29904, 25435
UniProt:	O00418 , P70531
Pathways:	AMPK Signaling

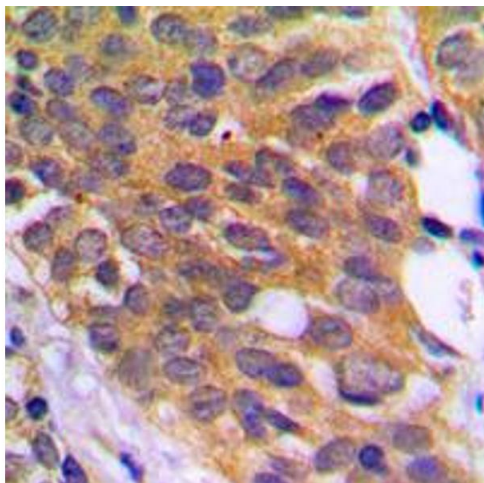
Application Details

Application Notes:	WB (1:500 - 1:1000), IH (1:100 - 1:200)
Restrictions:	For Research Use only

Handling

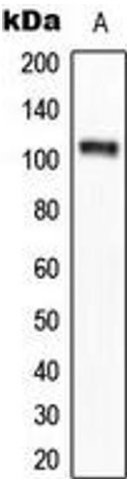
Format:	Liquid
Buffer:	Liquid in 0.42 % Potassium phosphate, 0.87 % Sodium chloride, pH 7.3, 30 % glycerol, and 0.01 % sodium azide.
Preservative:	Sodium azide
Precaution of Use:	This product contains Sodium azide: a POISONOUS AND HAZARDOUS SUBSTANCE which should be handled by trained staff only.
Storage:	-20 °C
Storage Comment:	Shipped at 4°C. Upon delivery aliquot and store at -20°C for one year. Avoid freeze/thaw cycles.
Expiry Date:	12 months

Images



Immunohistochemistry

Image 1. Immunohistochemical analysis of EEf2K (pS366) staining in human prostate cancer formalin fixed paraffin embedded tissue section. The section was pre-treated using heat mediated antigen retrieval with sodium citrate buffer (pH 6.0). The section was then incubated with the antibody at room temperature and detected using an HRP conjugated compact polymer system. DAB was used as the chromogen. The section was then counterstained with



haematoxylin and mounted with DPX.

Western Blotting

Image 2. Western blot analysis of EEF2K (pS366) expression in HeLa Calyculin A-treated (A) whole cell lysates.