



Datasheet for ABIN7299754 anti-KLF1/5/7 antibody (C-Term)



[Go to Product page](#)

2 Images

Overview

Quantity:	100 µL
Target:	KLF1/5/7
Binding Specificity:	C-Term
Reactivity:	Human, Mouse, Rat, Zebrafish (Danio rerio)
Host:	Rabbit
Clonality:	Polyclonal
Conjugate:	This KLF1/5/7 antibody is un-conjugated
Application:	Western Blotting (WB), Immunofluorescence (IF), Immunochromatography (IC)

Product Details

Immunogen:	KLH-conjugated synthetic peptide encompassing a sequence within the C-term region of human KLF1/5/7.
Specificity:	Recognizes endogenous levels of KLF1/5/7 protein.
Characteristics:	Rabbit polyclonal antibody to KLF1/5/7
Purification:	The antibody was purified by immunogen affinity chromatography.

Target Details

Target:	KLF1/5/7
Alternative Name:	KLF1/5/7 (KLF1/5/7 Products)
Background:	KLF1, EKLF, Krueppel-like factor 1, Erythroid krueppel-like transcription factor, EKLF, KLF5,

Target Details

BTEB2, CKLF, IKLF, Krueppel-like factor 5, Basic transcription element-binding protein 2, BTE-binding protein 2, Colon krueppel-like factor, GC-box-binding protein 2, Intestinal-enriched krueppel-like factor, Transcription factor BTEB2, KLF7, UKLF, Krueppel-like factor 7, Ubiquitous krueppel-like factor

Gene ID: 10661, 688, 8609

UniProt: [Q13351](#), [Q13887](#), [O75840](#), [P46099](#), [Q9Z0Z7](#), [Q99JB0](#)

Application Details

Application Notes: WB (1:500 - 1:1000), IF/IC (1:100 - 1:500)

Restrictions: For Research Use only

Handling

Format: Liquid

Buffer: Liquid in 0.42 % Potassium phosphate, 0.87 % Sodium chloride, pH 7.3, 30 % glycerol, and 0.01 % sodium azide.

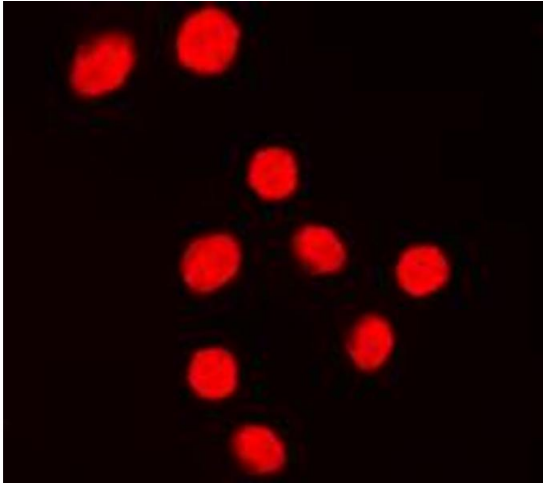
Preservative: Sodium azide

Precaution of Use: This product contains Sodium azide: a POISONOUS AND HAZARDOUS SUBSTANCE which should be handled by trained staff only.

Storage: -20 °C

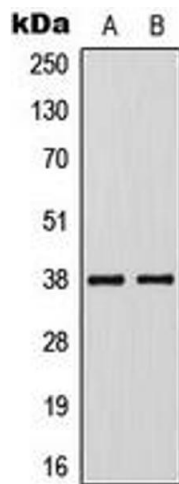
Storage Comment: Shipped at 4°C. Upon delivery aliquot and store at -20°C for one year. Avoid freeze/thaw cycles.

Expiry Date: 12 months



Immunofluorescence

Image 1. Immunofluorescent analysis of KLF1/5/7 staining in Jurkat cells. Formalin-fixed cells were permeabilized with 0.1% Triton X-100 in TBS for 5-10 minutes and blocked with 3% BSA-PBS for 30 minutes at room temperature. Cells were probed with the primary antibody in 3% BSA-PBS and incubated overnight at 4 °C in a humidified chamber. Cells were washed with PBST and incubated with a DyLight 594-conjugated secondary antibody (red) in PBS at room temperature in the dark. DAPI was used to stain the cell nuclei (blue).



Western Blotting

Image 2. Western blot analysis of KLF1/5/7 expression in Jurkat (A), VEC (B) whole cell lysates.