

Datasheet for ABIN7299762
anti-CSNK1A1 antibody (Center)

3 Images

[Go to Product page](#)

Overview

Quantity:	100 µL
Target:	CSNK1A1
Binding Specificity:	Center
Reactivity:	Human, Rat, Mouse, Cow, Chicken, Sheep, Zebrafish (Danio rerio), Rabbit
Host:	Rabbit
Clonality:	Polyclonal
Conjugate:	This CSNK1A1 antibody is un-conjugated
Application:	Western Blotting (WB), Immunohistochemistry (IHC), Immunofluorescence (IF), Immunochromatography (IC)

Product Details

Immunogen:	KLH-conjugated synthetic peptide encompassing a sequence within the center region of human CK1 alpha.
Specificity:	Recognizes endogenous levels of CK1 alpha protein.
Characteristics:	Rabbit polyclonal antibody to CK1 alpha
Purification:	The antibody was purified by immunogen affinity chromatography.

Target Details

Target:	CSNK1A1
Alternative Name:	CK1 alpha (CSNK1A1 Products)

Target Details

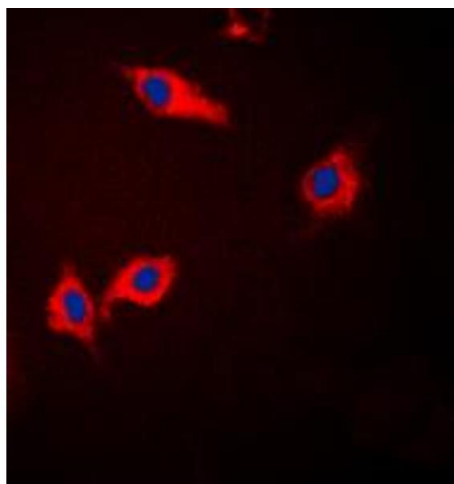
Background:	CSNK1A1L, Casein kinase I isoform alpha-like, CKI-alpha-like, CK1, CSNK1A1, Casein kinase I isoform alpha, CKI-alpha, CK1
Gene ID:	122011, 1452, 113927
UniProt:	Q8N752 , P48729 , Q8BK63 , P97633
Pathways:	WNT Signaling , Hedgehog Signaling

Application Details

Application Notes:	WB (1:500 - 1:1000), IH (1:100 - 1:200), IF/IC (1:100 - 1:500)
Restrictions:	For Research Use only

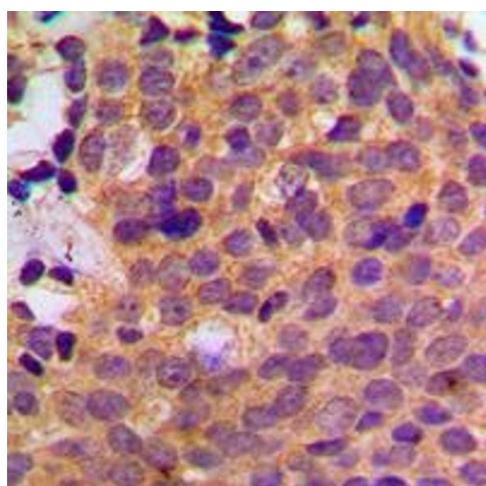
Handling

Format:	Liquid
Buffer:	Liquid in 0.42 % Potassium phosphate, 0.87 % Sodium chloride, pH 7.3, 30 % glycerol, and 0.01 % sodium azide.
Preservative:	Sodium azide
Precaution of Use:	This product contains Sodium azide: a POISONOUS AND HAZARDOUS SUBSTANCE which should be handled by trained staff only.
Storage:	-20 °C
Storage Comment:	Shipped at 4°C. Upon delivery aliquot and store at -20°C for one year. Avoid freeze/thaw cycles.
Expiry Date:	12 months



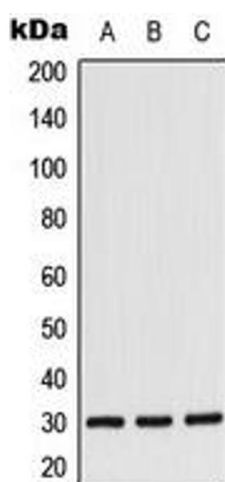
Immunofluorescence

Image 1. Immunofluorescent analysis of CK1 alpha staining in Jurkat cells. Formalin-fixed cells were permeabilized with 0.1% Triton X-100 in TBS for 5-10 minutes and blocked with 3% BSA-PBS for 30 minutes at room temperature. Cells were probed with the primary antibody in 3% BSA-PBS and incubated overnight at 4 °C in a humidified chamber. Cells were washed with PBST and incubated with a DyLight 594-conjugated secondary antibody (red) in PBS at room temperature in the dark. DAPI was used to stain the cell nuclei (blue).



Immunohistochemistry

Image 2. Immunohistochemical analysis of CK1 alpha staining in human breast cancer formalin fixed paraffin embedded tissue section. The section was pre-treated using heat mediated antigen retrieval with sodium citrate buffer (pH 6.0). The section was then incubated with the antibody at room temperature and detected using an HRP conjugated compact polymer system. DAB was used as the chromogen. The section was then counterstained with haematoxylin and mounted with DPX.



Western Blotting

Image 3. Western blot analysis of CK1 alpha expression in Jurkat (A), K562 (B), NIH3T3 (C) whole cell lysates.