



Datasheet for ABIN7299800
anti-Sp3/4 antibody (C-Term)



[Go to Product page](#)

2 Images

Overview

| | |
|----------------------|---|
| Quantity: | 100 µL |
| Target: | Sp3/4 |
| Binding Specificity: | C-Term |
| Reactivity: | Human, Mouse, Chicken, Zebrafish (Danio rerio) |
| Host: | Rabbit |
| Clonality: | Polyclonal |
| Conjugate: | This Sp3/4 antibody is un-conjugated |
| Application: | Western Blotting (WB), Immunofluorescence (IF), Immunochromatography (IC) |

Product Details

| | |
|------------------|---|
| Immunogen: | KLH-conjugated synthetic peptide encompassing a sequence within the C-term region of human SP3/4. |
| Specificity: | Recognizes endogenous levels of SP3/4 protein. |
| Characteristics: | Rabbit polyclonal antibody to SP3/4 |
| Purification: | The antibody was purified by immunogen affinity chromatography. |

Target Details

| | |
|-------------|--|
| Target: | Sp3/4 |
| Abstract: | Sp3/4 Products |
| Background: | SP3, Transcription factor Sp3, SPR-2, SP4, Transcription factor Sp4, SPR-1 |

Target Details

Gene ID: 6670, 6671, 20687

UniProt: [Q02447](#), [Q02446](#), [O70494](#), [Q62445](#)

Application Details

Application Notes: WB (1:500 - 1:1000), IF/IC (1:100 - 1:500)

Restrictions: For Research Use only

Handling

Format: Liquid

Buffer: Liquid in 0.42 % Potassium phosphate, 0.87 % Sodium chloride, pH 7.3, 30 % glycerol, and 0.01 % sodium azide.

Preservative: Sodium azide

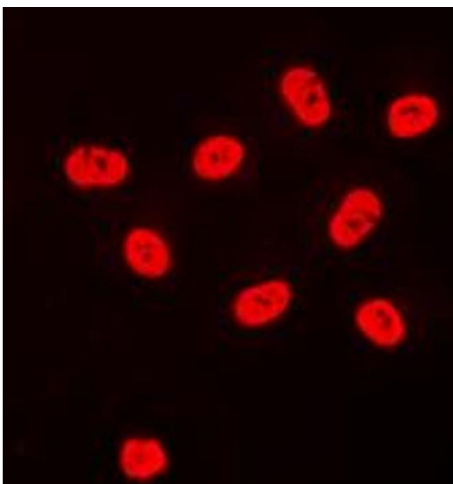
Precaution of Use: This product contains Sodium azide: a POISONOUS AND HAZARDOUS SUBSTANCE which should be handled by trained staff only.

Storage: -20 °C

Storage Comment: Shipped at 4°C. Upon delivery aliquot and store at -20°C for one year. Avoid freeze/thaw cycles.

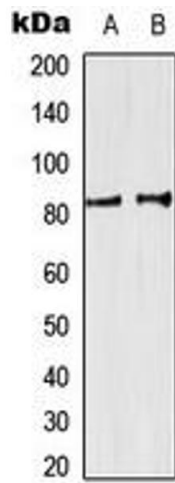
Expiry Date: 12 months

Images



Immunofluorescence

Image 1. Immunofluorescent analysis of SP3/4 staining in HeLa cells. Formalin-fixed cells were permeabilized with 0.1% Triton X-100 in TBS for 5-10 minutes and blocked with 3% BSA-PBS for 30 minutes at room temperature. Cells were probed with the primary antibody in 3% BSA-PBS and incubated overnight at 4 °C in a humidified chamber. Cells were washed with PBST and incubated with a DyLight 594-conjugated secondary antibody (red) in PBS at room temperature in the dark. DAPI was used to stain the cell nuclei (blue).



Western Blotting

Image 2. Western blot analysis of SP3/4 expression in HeLa (A), K562 (B) whole cell lysates.