

Datasheet for ABIN7299806

anti-Synaptotagmin antibody (Center)**2** Images[Go to Product page](#)

Overview

| | |
|----------------------|---|
| Quantity: | 100 µL |
| Target: | Synaptotagmin (SYT) |
| Binding Specificity: | Center |
| Reactivity: | Rat, Mouse, Human, Cow, Chicken, Monkey |
| Host: | Rabbit |
| Clonality: | Polyclonal |
| Conjugate: | This Synaptotagmin antibody is un-conjugated |
| Application: | Western Blotting (WB), Immunohistochemistry (IHC) |

Product Details

| | |
|------------------|---|
| Immunogen: | KLH-conjugated synthetic peptide encompassing a sequence within the center region of human Synaptotagmin. |
| Specificity: | Recognizes endogenous levels of Synaptotagmin protein. |
| Characteristics: | Rabbit polyclonal antibody to Synaptotagmin |
| Purification: | The antibody was purified by immunogen affinity chromatography. |

Target Details

| | |
|-------------------|---|
| Target: | Synaptotagmin (SYT) |
| Alternative Name: | Synaptotagmin (SYT Products) |
| Background: | SYT1, SVP65, SYT, Synaptotagmin-1, Synaptotagmin I, Sytl, p65, SYT2, Synaptotagmin-2, |

Target Details

| | |
|----------|---|
| | Synaptotagmin II, SytII |
| Gene ID: | 6857, 127833, 20979 |
| UniProt: | P21579 , Q8N9I0 , P46096 , P46097 , P21707 , P29101 |

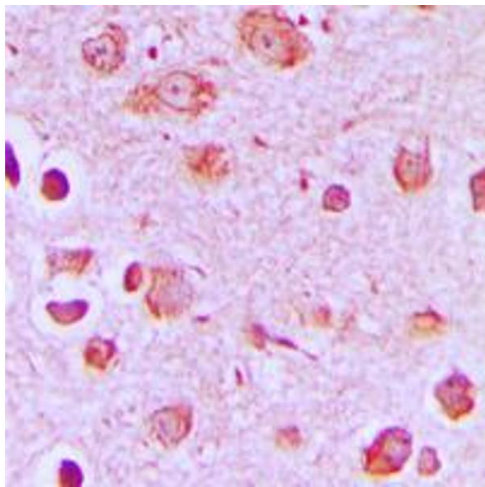
Application Details

| | |
|--------------------|---|
| Application Notes: | WB (1:500 - 1:1000), IH (1:100 - 1:200) |
| Restrictions: | For Research Use only |

Handling

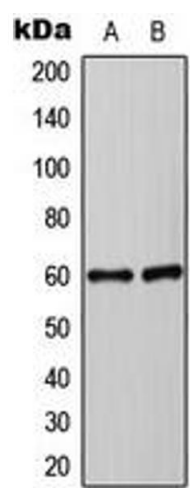
| | |
|--------------------|--|
| Format: | Liquid |
| Buffer: | Liquid in 0.42 % Potassium phosphate, 0.87 % Sodium chloride, pH 7.3, 30 % glycerol, and 0.01 % sodium azide. |
| Preservative: | Sodium azide |
| Precaution of Use: | This product contains Sodium azide: a POISONOUS AND HAZARDOUS SUBSTANCE which should be handled by trained staff only. |
| Storage: | -20 °C |
| Storage Comment: | Shipped at 4°C. Upon delivery aliquot and store at -20°C for one year. Avoid freeze/thaw cycles. |
| Expiry Date: | 12 months |

Images



Immunohistochemistry

Image 1. Immunohistochemical analysis of Synaptotagmin staining in human brain formalin fixed paraffin embedded tissue section. The section was pre-treated using heat mediated antigen retrieval with sodium citrate buffer (pH 6.0). The section was then incubated with the antibody at room temperature and detected using an HRP conjugated compact polymer system. DAB was used as the chromogen. The section was then counterstained with haematoxylin and mounted with DPX.



Western Blotting

Image 2. Western blot analysis of Synaptotagmin expression in HEK293T (A), Jurakt (B) whole cell lysates.