



Datasheet for ABIN7299876
anti-SLC6A12 antibody (C-Term)



[Go to Product page](#)

1 Image

Overview

Quantity:	100 µL
Target:	SLC6A12
Binding Specificity:	C-Term
Reactivity:	Human, Rat, Mouse
Host:	Rabbit
Clonality:	Polyclonal
Conjugate:	This SLC6A12 antibody is un-conjugated
Application:	Western Blotting (WB)

Product Details

Immunogen:	KLH-conjugated synthetic peptide encompassing a sequence within the C-term region of human BGT-1.
Specificity:	Recognizes endogenous levels of BGT-1 protein.
Characteristics:	Rabbit polyclonal antibody to BGT-1
Purification:	The antibody was purified by immunogen affinity chromatography.

Target Details

Target:	SLC6A12
Alternative Name:	BGT-1 (SLC6A12 Products)
Background:	Sodium- and chloride-dependent betaine transporter, BGT-1, Na(+)/Cl(-) betaine/GABA

Target Details

transporter, Solute carrier family 6 member 12

Gene ID: 6539, 50676

UniProt: [P48065](#), [P31651](#), [P48056](#)

Application Details

Application Notes: WB (1:500 - 1:1000)

Restrictions: For Research Use only

Handling

Format: Liquid

Buffer: Liquid in 0.42 % Potassium phosphate, 0.87 % Sodium chloride, pH 7.3, 30 % glycerol, and 0.01 % sodium azide.

Preservative: Sodium azide

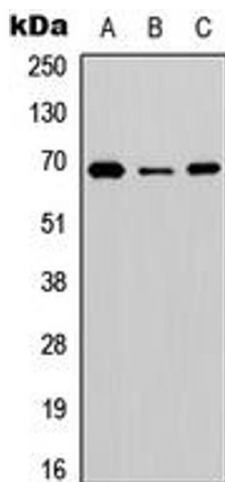
Precaution of Use: This product contains Sodium azide: a POISONOUS AND HAZARDOUS SUBSTANCE which should be handled by trained staff only.

Storage: -20 °C

Storage Comment: Shipped at 4°C. Upon delivery aliquot and store at -20°C for one year. Avoid freeze/thaw cycles.

Expiry Date: 12 months

Images



Western Blotting

Image 1. Western blot analysis of BGT-1 expression in HEK293T (A), NS-1 (B), PC12 (C) whole cell lysates.