



[Go to Product page](#)

Datasheet for ABIN729988

anti-WDR26 antibody (AA 101-200)

5 Images

1 Publication

Overview

Quantity:	100 µL
Target:	WDR26
Binding Specificity:	AA 101-200
Reactivity:	Human, Mouse, Rat
Host:	Rabbit
Clonality:	Polyclonal
Conjugate:	This WDR26 antibody is un-conjugated
Application:	Western Blotting (WB), Flow Cytometry (FACS), Immunofluorescence (Cultured Cells) (IF (cc)), Immunofluorescence (Paraffin-embedded Sections) (IF (p)), Immunohistochemistry (Paraffin-embedded Sections) (IHC (p)), Immunohistochemistry (Frozen Sections) (IHC (fro)), ELISA

Product Details

Immunogen:	KLH conjugated synthetic peptide derived from human WDR26
Isotype:	IgG
Cross-Reactivity:	Human, Mouse, Rat
Predicted Reactivity:	Dog,Cow,Horse,Chicken
Purification:	Purified by Protein A.

Target Details

Target:	WDR26
---------	-------

Target Details

Alternative Name: WDR26 ([WDR26 Products](#))

Background: Synonyms: CDW2, GID7, MIP2, WD repeat-containing protein 26, CUL4- and DDB1-associated WDR protein 2, Myocardial ischemic preconditioning up-regulated protein 2, WDR26, PRO852
Background: This gene encodes a member of the WD repeat protein family. WD repeats are minimally conserved regions of approximately 40 amino acids typically bracketed by gly-his and trp-asp (GH-WD), which may facilitate formation of heterotrimeric or multiprotein complexes. Members of this family are involved in a variety of cellular processes, including cell cycle progression, signal transduction, apoptosis, and gene regulation. Two transcript variants encoding two different isoforms have been found for this gene. [provided by RefSeq].

Gene ID: 80232

UniProt: [Q9H7D7](#)

Application Details

Application Notes: WB 1:300-5000
ELISA 1:500-1000
FCM 1:20-100
IHC-P 1:200-400
IHC-F 1:100-500
IF(IHC-P) 1:50-200
IF(IHC-F) 1:50-200
IF(ICC) 1:50-200

Restrictions: For Research Use only

Handling

Format: Liquid

Concentration: 1 µg/µL

Buffer: 0.01M TBS(pH 7.4) with 1 % BSA, 0.02 % Proclin300 and 50 % Glycerol.

Preservative: ProClin

Precaution of Use: This product contains ProClin: a POISONOUS AND HAZARDOUS SUBSTANCE, which should be handled by trained staff only.

Storage: 4 °C, -20 °C

Handling

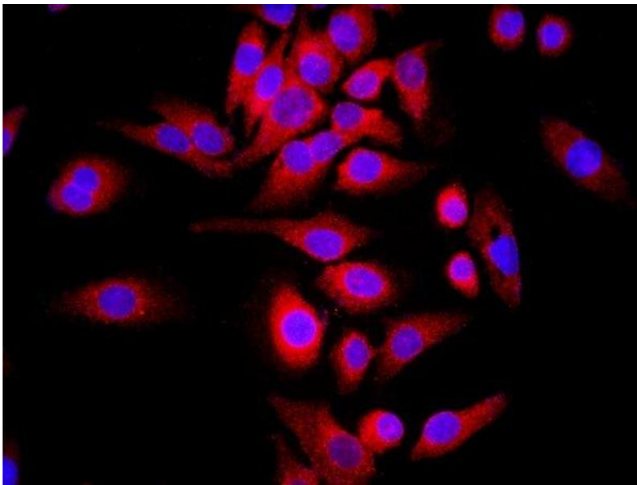
Storage Comment: Shipped at 4°C. Store at -20°C for one year. Avoid repeated freeze/thaw cycles.

Expiry Date: 12 months

Publications

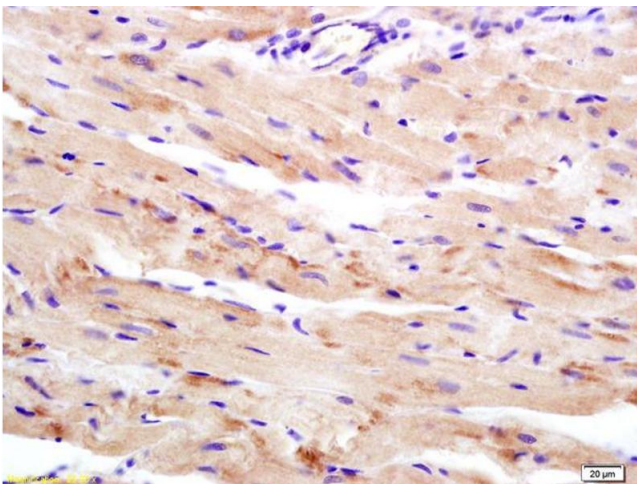
Product cited in: Su, Min, Cao, Yan, Zhao, Li, Chai, Mei, Yang, Zhang, Zhang, Liu, Sun, Che, Yang: "LRRC19 expressed in the kidney induces TRAF2/6-mediated signals to prevent infection by uropathogenic bacteria." in: **Nature communications**, Vol. 5, pp. 4434, (2014) ([PubMed](#)).

Images



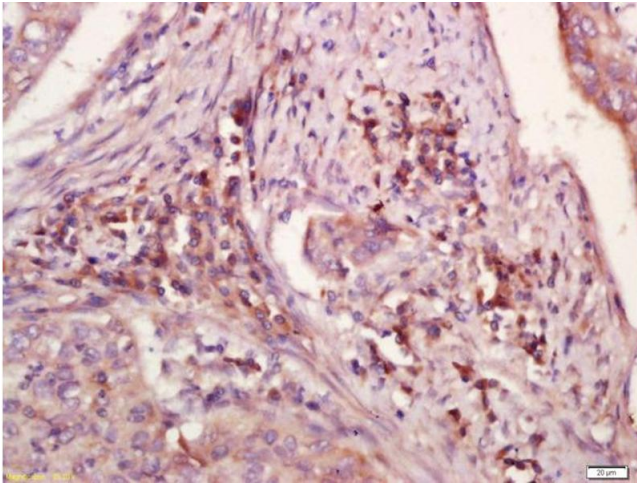
Immunofluorescence (Cultured Cells)

Image 1. MCF-7 cells were stained with WDR26 Polyclonal Antibody, Unconjugated at 1:500 in PBS and incubated for two hours at 37°C followed by Goat Anti-Rabbit IgG (H+L) Cy3 conjugated secondary antibody. DAPI staining of the nucleus was done and then detected.



Immunohistochemistry

Image 2. Formalin-fixed and paraffin embedded rat heart labeled with Anti-WDR26 Polyclonal Antibody, Unconjugated (ABIN729988) at 1:200 followed by conjugation to the secondary antibody and DAB staining



Immunohistochemistry

Image 3. Formalin-fixed and paraffin embedded human laryngocarcinoma labeled with Anti-WDR26 Polyclonal Antibody, Unconjugated (ABIN729988) at 1:200 followed by conjugation to the secondary antibody and DAB staining

Please check the [product details page](#) for more images. Overall 5 images are available for ABIN729988.