



[Go to Product page](#)

Datasheet for ABIN7299950  
**anti-COL15A1 antibody (C-Term)**

1 Image

Overview

Quantity:	100 µL
Target:	COL15A1
Binding Specificity:	C-Term
Reactivity:	Human, Monkey
Host:	Rabbit
Clonality:	Polyclonal
Conjugate:	This COL15A1 antibody is un-conjugated
Application:	Western Blotting (WB)

Product Details

Immunogen:	KLH-conjugated synthetic peptide encompassing a sequence within the C-term region of human Collagen 15 alpha 1.
Specificity:	Recognizes endogenous levels of Collagen 15 alpha 1 protein.
Characteristics:	Rabbit polyclonal antibody to Collagen 15 alpha 1
Purification:	The antibody was purified by immunogen affinity chromatography.

Target Details

Target:	COL15A1
Alternative Name:	Collagen 15 alpha 1 ( <a href="#">COL15A1 Products</a> )
Background:	Collagen alpha-1(XV) chain

## Target Details

Gene ID: 1306, 12819

UniProt: [P39059](#), [O35206](#)

## Application Details

Application Notes: WB (1:500 - 1:1000)

Restrictions: For Research Use only

## Handling

Format: Liquid

Buffer: Liquid in 0.42 % Potassium phosphate, 0.87 % Sodium chloride, pH 7.3, 30 % glycerol, and 0.01 % sodium azide.

Preservative: Sodium azide

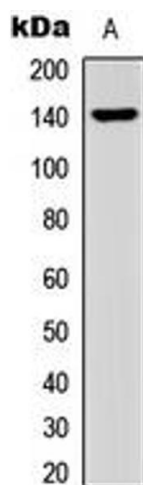
Precaution of Use: This product contains Sodium azide: a POISONOUS AND HAZARDOUS SUBSTANCE which should be handled by trained staff only.

Storage: -20 °C

Storage Comment: Shipped at 4°C. Upon delivery aliquot and store at -20°C for one year. Avoid freeze/thaw cycles.

Expiry Date: 12 months

## Images



### Western Blotting

**Image 1.** Western blot analysis of Collagen 15 alpha 1 expression in HEK293T (A) whole cell lysates.