



[Go to Product page](#)

Datasheet for ABIN7299958  
**anti-CYFIP1 antibody (C-Term)**

1 Image

### Overview

Quantity:	100 µL
Target:	CYFIP1
Binding Specificity:	C-Term
Reactivity:	Human, Mouse, Rat, Zebrafish (Danio rerio), Pig
Host:	Rabbit
Clonality:	Polyclonal
Conjugate:	This CYFIP1 antibody is un-conjugated
Application:	Western Blotting (WB)

### Product Details

Immunogen:	KLH-conjugated synthetic peptide encompassing a sequence within the C-term region of human CYFIP1.
Specificity:	Recognizes endogenous levels of CYFIP1 protein.
Characteristics:	Rabbit polyclonal antibody to CYFIP1
Purification:	The antibody was purified by immunogen affinity chromatography.

### Target Details

Target:	CYFIP1
Alternative Name:	CYFIP1 ( <a href="#">CYFIP1 Products</a> )
Background:	KIAA0068, Cytoplasmic FMR1-interacting protein 1, Specifically Rac1-associated protein 1, Sra-

## Target Details

	1, p140sra-1
Gene ID:	23191, 20430
UniProt:	<a href="#">Q7L576</a> , <a href="#">Q7TMB8</a>

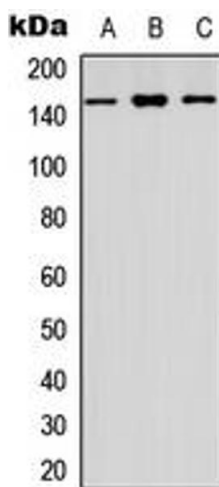
## Application Details

Application Notes:	WB (1:500 - 1:1000)
Restrictions:	For Research Use only

## Handling

Format:	Liquid
Buffer:	Liquid in 0.42 % Potassium phosphate, 0.87 % Sodium chloride, pH 7.3, 30 % glycerol, and 0.01 % sodium azide.
Preservative:	Sodium azide
Precaution of Use:	This product contains Sodium azide: a POISONOUS AND HAZARDOUS SUBSTANCE which should be handled by trained staff only.
Storage:	-20 °C
Storage Comment:	Shipped at 4°C. Upon delivery aliquot and store at -20°C for one year. Avoid freeze/thaw cycles.
Expiry Date:	12 months

## Images



### Western Blotting

**Image 1.** Western blot analysis of CYFIP1 expression in HEK293T (A), Raw264.7 (B), PC12 (C) whole cell lysates.