

Datasheet for ABIN7299964
anti-CYP27C1 antibody (Center)



[Go to Product page](#)

1 Image

Overview

| | |
|----------------------|--|
| Quantity: | 100 µL |
| Target: | CYP27C1 |
| Binding Specificity: | Center |
| Reactivity: | Human, Rat, Mouse |
| Host: | Rabbit |
| Clonality: | Polyclonal |
| Conjugate: | This CYP27C1 antibody is un-conjugated |
| Application: | Western Blotting (WB) |

Product Details

| | |
|------------------|--|
| Immunogen: | KLH-conjugated synthetic peptide encompassing a sequence within the center region of human Cytochrome P450 27C1. |
| Specificity: | Recognizes endogenous levels of Cytochrome P450 27C1 protein. |
| Characteristics: | Rabbit polyclonal antibody to Cytochrome P450 27C1 |
| Purification: | The antibody was purified by immunogen affinity chromatography. |

Target Details

| | |
|-------------------|---|
| Target: | CYP27C1 |
| Alternative Name: | Cytochrome P450 27C1 (CYP27C1 Products) |
| Background: | Cytochrome P450 27C1 |

Target Details

| | |
|----------|------------------------|
| Gene ID: | 339761 |
| UniProt: | Q4G0S4 |

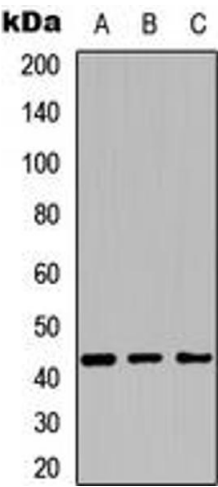
Application Details

| | |
|--------------------|-----------------------|
| Application Notes: | WB (1:500 - 1:1000) |
| Restrictions: | For Research Use only |

Handling

| | |
|--------------------|--|
| Format: | Liquid |
| Buffer: | Liquid in 0.42 % Potassium phosphate, 0.87 % Sodium chloride, pH 7.3, 30 % glycerol, and 0.01 % sodium azide. |
| Preservative: | Sodium azide |
| Precaution of Use: | This product contains Sodium azide: a POISONOUS AND HAZARDOUS SUBSTANCE which should be handled by trained staff only. |
| Storage: | -20 °C |
| Storage Comment: | Shipped at 4°C. Upon delivery aliquot and store at -20°C for one year. Avoid freeze/thaw cycles. |
| Expiry Date: | 12 months |

Images



Western Blotting

Image 1. Western blot analysis of Cytochrome P450 27C1 expression in HEK293T (A), NIH3T3 (B), PC12 (C) whole cell lysates.