

Datasheet for ABIN7299990
anti-SLC29A2 antibody (Center)



[Go to Product page](#)

1 Image

Overview

Quantity:	100 µL
Target:	SLC29A2
Binding Specificity:	Center
Reactivity:	Human, Mouse, Cow
Host:	Rabbit
Clonality:	Polyclonal
Conjugate:	This SLC29A2 antibody is un-conjugated
Application:	Western Blotting (WB)

Product Details

Immunogen:	KLH-conjugated synthetic peptide encompassing a sequence within the center region of human ENT2.
Specificity:	Recognizes endogenous levels of ENT2 protein.
Characteristics:	Rabbit polyclonal antibody to ENT2
Purification:	The antibody was purified by immunogen affinity chromatography.

Target Details

Target:	SLC29A2
Alternative Name:	ENT2 (SLC29A2 Products)
Target Type:	Chemical

Target Details

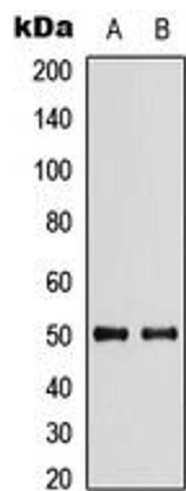
Background:	DER12, ENT2, HNP36, Equilibrative nucleoside transporter 2, 36 kDa nucleolar protein HNP36, Delayed-early response protein 12, Equilibrative nitrobenzylmercaptapurine riboside-insensitive nucleoside transporter, Equilibrative NBMPR-insensitive nucleoside transporter, Hydrophobic nucleolar protein, 36 kDa, Nucleoside transporter, ei-type, Solute carrier family 29 member 2
Gene ID:	3177, 13340
UniProt:	Q14542 , Q61672

Application Details

Application Notes:	WB (1:500 - 1:1000)
Restrictions:	For Research Use only

Handling

Format:	Liquid
Buffer:	Liquid in 0.42 % Potassium phosphate, 0.87 % Sodium chloride, pH 7.3, 30 % glycerol, and 0.01 % sodium azide.
Preservative:	Sodium azide
Precaution of Use:	This product contains Sodium azide: a POISONOUS AND HAZARDOUS SUBSTANCE which should be handled by trained staff only.
Storage:	-20 °C
Storage Comment:	Shipped at 4°C. Upon delivery aliquot and store at -20°C for one year. Avoid freeze/thaw cycles.
Expiry Date:	12 months



Western Blotting

Image 1. Western blot analysis of ENT2 expression in HEK293T (A), Raw264.7 (B) whole cell lysates.