



Datasheet for ABIN7300046  
**anti-GCP2 antibody (Center)**



[Go to Product page](#)

1 Image

Overview

Quantity:	100 µL
Target:	GCP2
Binding Specificity:	Center
Reactivity:	Human, Mouse, Rat
Host:	Rabbit
Clonality:	Polyclonal
Conjugate:	This GCP2 antibody is un-conjugated
Application:	Western Blotting (WB)

Product Details

Immunogen:	KLH-conjugated synthetic peptide encompassing a sequence within the center region of human GCP2.
Specificity:	Recognizes endogenous levels of GCP2 protein.
Characteristics:	Rabbit polyclonal antibody to GCP2
Purification:	The antibody was purified by immunogen affinity chromatography.

Target Details

Target:	GCP2
Alternative Name:	GCP2 ( <a href="#">GCP2 Products</a> )
Background:	GCP2, Gamma-tubulin complex component 2, GCP-2, hGCP2, Gamma-ring complex protein 103

## Target Details

kDa, h103p, hGrip103, Spindle pole body protein Spc97 homolog, hSpc97

Gene ID: 10844, 74237

UniProt: [Q9BSJ2](#), [Q921G8](#)

Pathways: [Cellular Response to Molecule of Bacterial Origin](#), [Regulation of Leukocyte Mediated Immunity](#)

## Application Details

Application Notes: WB (1:500 - 1:1000)

Restrictions: For Research Use only

## Handling

Format: Liquid

Buffer: Liquid in 0.42 % Potassium phosphate, 0.87 % Sodium chloride, pH 7.3, 30 % glycerol, and 0.01 % sodium azide.

Preservative: Sodium azide

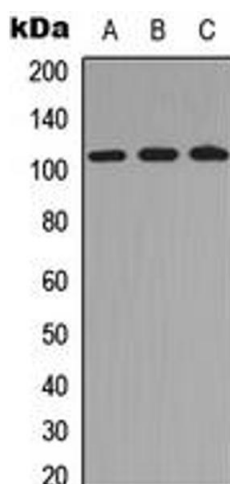
Precaution of Use: This product contains Sodium azide: a POISONOUS AND HAZARDOUS SUBSTANCE which should be handled by trained staff only.

Storage: -20 °C

Storage Comment: Shipped at 4°C. Upon delivery aliquot and store at -20°C for one year. Avoid freeze/thaw cycles.

Expiry Date: 12 months

## Images



### Western Blotting

**Image 1.** Western blot analysis of GCP2 expression in HEK293T (A), Raw264.7 (B), PC12 (C) whole cell lysates.