

Datasheet for ABIN7300104

## anti-KCNE1-Like antibody (Center)



[Go to Product page](#)

### 1 Image

#### Overview

Quantity:	100 µL
Target:	KCNE1-Like (KCNE1L)
Binding Specificity:	Center
Reactivity:	Human, Cow, Monkey
Host:	Rabbit
Clonality:	Polyclonal
Conjugate:	This KCNE1-Like antibody is un-conjugated
Application:	Western Blotting (WB)

#### Product Details

Immunogen:	KLH-conjugated synthetic peptide encompassing a sequence within the center region of human KCNE1L.
Specificity:	Recognizes endogenous levels of KCNE1L protein.
Characteristics:	Rabbit polyclonal antibody to KCNE1L
Purification:	The antibody was purified by immunogen affinity chromatography.

#### Target Details

Target:	KCNE1-Like (KCNE1L)
Alternative Name:	KCNE1L ( <a href="#">KCNE1L Products</a> )
Background:	AMMECR2, Potassium voltage-gated channel subfamily E member 1-like protein, AMME

Target Details

	syndrome candidate gene 2 protein
Gene ID:	23630
UniProt:	<a href="#">Q9UJ90</a>

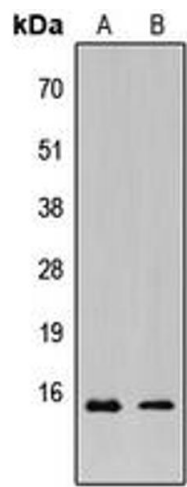
Application Details

Application Notes:	WB (1:500 - 1:1000)
Restrictions:	For Research Use only

Handling

Format:	Liquid
Buffer:	Liquid in 0.42 % Potassium phosphate, 0.87 % Sodium chloride, pH 7.3, 30 % glycerol, and 0.01 % sodium azide.
Preservative:	Sodium azide
Precaution of Use:	This product contains Sodium azide: a POISONOUS AND HAZARDOUS SUBSTANCE which should be handled by trained staff only.
Storage:	-20 °C
Storage Comment:	Shipped at 4°C. Upon delivery aliquot and store at -20°C for one year. Avoid freeze/thaw cycles.
Expiry Date:	12 months

Images



Western Blotting

**Image 1.** Western blot analysis of KCNE1L expression in HeLa (A), MCF7 (B) whole cell lysates.