

Datasheet for ABIN7300106
anti-KCNJ15 antibody (Center)



[Go to Product page](#)

1 Image

Overview

Quantity:	100 µL
Target:	KCNJ15
Binding Specificity:	Center
Reactivity:	Human, Mouse, Rat, Monkey
Host:	Rabbit
Clonality:	Polyclonal
Conjugate:	This KCNJ15 antibody is un-conjugated
Application:	Western Blotting (WB)

Product Details

Immunogen:	KLH-conjugated synthetic peptide encompassing a sequence within the center region of human Kir4.2.
Specificity:	Recognizes endogenous levels of Kir4.2 protein.
Characteristics:	Rabbit polyclonal antibody to Kir4.2
Purification:	The antibody was purified by immunogen affinity chromatography.

Target Details

Target:	KCNJ15
Alternative Name:	Kir4.2 (KCNJ15 Products)
Background:	KCNJ14, ATP-sensitive inward rectifier potassium channel 15, Inward rectifier K(+) channel

Target Details

	Kir1.3, Inward rectifier K(+) channel Kir4.2, Potassium channel, inwardly rectifying subfamily J member 15
Gene ID:	3772, 16516, 170847
UniProt:	Q99712 , O88932 , Q91ZF1

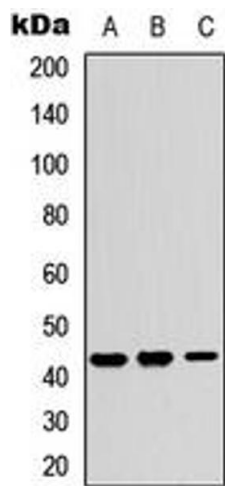
Application Details

Application Notes:	WB (1:500 - 1:1000)
Restrictions:	For Research Use only

Handling

Format:	Liquid
Buffer:	Liquid in 0.42 % Potassium phosphate, 0.87 % Sodium chloride, pH 7.3, 30 % glycerol, and 0.01 % sodium azide.
Preservative:	Sodium azide
Precaution of Use:	This product contains Sodium azide: a POISONOUS AND HAZARDOUS SUBSTANCE which should be handled by trained staff only.
Storage:	-20 °C
Storage Comment:	Shipped at 4°C. Upon delivery aliquot and store at -20°C for one year. Avoid freeze/thaw cycles.
Expiry Date:	12 months

Images



Western Blotting

Image 1. Western blot analysis of Kir4.2 expression in A549 (A), NS-1 (B), PC12 (C) whole cell lysates.