



Datasheet for ABIN7300112  
**anti-LPHN2 antibody (Center)**



[Go to Product page](#)

2 Images

Overview

Quantity:	100 µL
Target:	LPHN2
Binding Specificity:	Center
Reactivity:	Human, Rat, Mouse, Cow
Host:	Rabbit
Clonality:	Polyclonal
Conjugate:	This LPHN2 antibody is un-conjugated
Application:	Immunohistochemistry (IHC), Western Blotting (WB)

Product Details

Immunogen:	KLH-conjugated synthetic peptide encompassing a sequence within the center region of human LPHN2.
Specificity:	Recognizes endogenous levels of LPHN2 protein.
Characteristics:	Rabbit polyclonal antibody to LPHN2
Purification:	The antibody was purified by immunogen affinity chromatography.

Target Details

Target:	LPHN2
Alternative Name:	LPHN2 ( <a href="#">LPHN2 Products</a> )
Background:	KIAA0786, LEC1, LPHH1, Latrophilin-2, Calcium-independent alpha-latrotoxin receptor 2, CIRL-2,

## Target Details

Latrophilin homolog 1, Lectomedin-1

Gene ID: 23266, 171447

UniProt: [O95490](#), [Q8JZZ7](#), [O88923](#)

## Application Details

Application Notes: WB (1:500 - 1:1000), IH (1:100 - 1:200)

Restrictions: For Research Use only

## Handling

Format: Liquid

Buffer: Liquid in 0.42 % Potassium phosphate, 0.87 % Sodium chloride, pH 7.3, 30 % glycerol, and 0.01 % sodium azide.

Preservative: Sodium azide

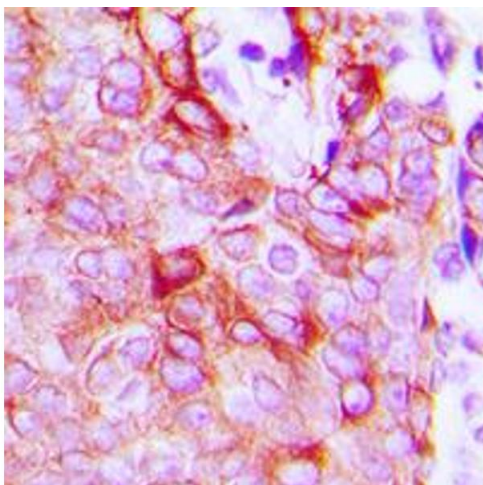
Precaution of Use: This product contains Sodium azide: a POISONOUS AND HAZARDOUS SUBSTANCE which should be handled by trained staff only.

Storage: -20 °C

Storage Comment: Shipped at 4°C. Upon delivery aliquot and store at -20°C for one year. Avoid freeze/thaw cycles.

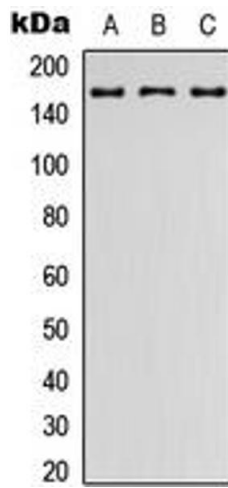
Expiry Date: 12 months

## Images



### Immunohistochemistry

**Image 1.** Immunohistochemical analysis of LPHN2 staining in human breast cancer formalin fixed paraffin embedded tissue section. The section was pre-treated using heat mediated antigen retrieval with sodium citrate buffer (pH 6.0). The section was then incubated with the antibody at room temperature and detected using an HRP conjugated compact polymer system. DAB was used as the chromogen. The section was then counterstained with haematoxylin and mounted with DPX. w



### Western Blotting

**Image 2.** Western blot analysis of LPHN2 expression in HEK293T (A), Raw264.7 (B), PC12 (C) whole cell lysates.