



[Go to Product page](#)

Datasheet for ABIN7300176
anti-CCRN4L antibody (Center)

1 Image

Overview

Quantity:	100 µL
Target:	CCRN4L
Binding Specificity:	Center
Reactivity:	Human, Rat, Mouse, Cow, Chicken
Host:	Rabbit
Clonality:	Polyclonal
Conjugate:	This CCRN4L antibody is un-conjugated
Application:	Western Blotting (WB)

Product Details

Immunogen:	KLH-conjugated synthetic peptide encompassing a sequence within the center region of human Nocturnin.
Specificity:	Recognizes endogenous levels of Nocturnin protein.
Characteristics:	Rabbit polyclonal antibody to Nocturnin
Purification:	The antibody was purified by immunogen affinity chromatography.

Target Details

Target:	CCRN4L
Alternative Name:	Nocturnin (CCRN4L Products)
Background:	CCR4, NOC, Nocturnin, Carbon catabolite repression 4-like protein, Circadian deadenylase NOC

Target Details

Gene ID:	25819, 12457, 310395
UniProt:	Q9UK39 , O35710 , Q9ET55
Pathways:	Ribonucleoprotein Complex Subunit Organization

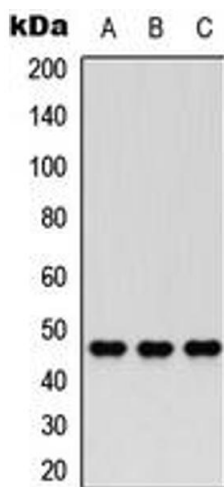
Application Details

Application Notes:	WB (1:500 - 1:1000)
Restrictions:	For Research Use only

Handling

Format:	Liquid
Buffer:	Liquid in 0.42 % Potassium phosphate, 0.87 % Sodium chloride, pH 7.3, 30 % glycerol, and 0.01 % sodium azide.
Preservative:	Sodium azide
Precaution of Use:	This product contains Sodium azide: a POISONOUS AND HAZARDOUS SUBSTANCE which should be handled by trained staff only.
Storage:	-20 °C
Storage Comment:	Shipped at 4°C. Upon delivery aliquot and store at -20°C for one year. Avoid freeze/thaw cycles.
Expiry Date:	12 months

Images



Western Blotting

Image 1. Western blot analysis of Nocturnin expression in HEK293T (A), PC12 (B), HeLa (C) whole cell lysates.