



[Go to Product page](#)

Datasheet for ABIN7300184
anti-NUP210L antibody (Center)

1 Image

Overview

Quantity:	100 µL
Target:	NUP210L
Binding Specificity:	Center
Reactivity:	Human, Rat
Host:	Rabbit
Clonality:	Polyclonal
Conjugate:	This NUP210L antibody is un-conjugated
Application:	Western Blotting (WB)

Product Details

Immunogen:	KLH-conjugated synthetic peptide encompassing a sequence within the center region of human NUP210L.
Specificity:	Recognizes endogenous levels of NUP210L protein.
Characteristics:	Rabbit polyclonal antibody to NUP210L
Purification:	The antibody was purified by immunogen affinity chromatography.

Target Details

Target:	NUP210L
Alternative Name:	NUP210L (NUP210L Products)
Background:	Nuclear pore membrane glycoprotein 210-like, Nucleoporin 210 kDa-like, Nucleoporin Nup210-

Target Details

like

Gene ID: 91181, 77595

UniProt: [Q5VU65](#), [Q9D2F7](#)

Application Details

Application Notes: WB (1:500 - 1:1000)

Restrictions: For Research Use only

Handling

Format: Liquid

Buffer: Liquid in 0.42 % Potassium phosphate, 0.87 % Sodium chloride, pH 7.3, 30 % glycerol, and 0.01 % sodium azide.

Preservative: Sodium azide

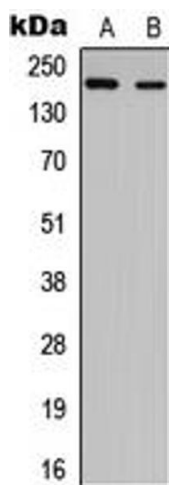
Precaution of Use: This product contains Sodium azide: a POISONOUS AND HAZARDOUS SUBSTANCE which should be handled by trained staff only.

Storage: -20 °C

Storage Comment: Shipped at 4°C. Upon delivery aliquot and store at -20°C for one year. Avoid freeze/thaw cycles.

Expiry Date: 12 months

Images



Western Blotting

Image 1. Western blot analysis of NUP210L expression in HEK293T (A), PC12 (B) whole cell lysates.