

Datasheet for ABIN7300212
anti-PPP1R13B antibody (Center)



[Go to Product page](#)

1 Image

Overview

Quantity:	100 µL
Target:	PPP1R13B
Binding Specificity:	Center
Reactivity:	Human, Mouse, Rat
Host:	Rabbit
Clonality:	Polyclonal
Conjugate:	This PPP1R13B antibody is un-conjugated
Application:	Western Blotting (WB)

Product Details

Immunogen:	KLH-conjugated synthetic peptide encompassing a sequence within the center region of human PPP1R13B.
Specificity:	Recognizes endogenous levels of PPP1R13B protein.
Characteristics:	Rabbit polyclonal antibody to PPP1R13B
Purification:	The antibody was purified by immunogen affinity chromatography.

Target Details

Target:	PPP1R13B
Alternative Name:	PPP1R13B (PPP1R13B Products)
Background:	ASPP1, KIAA0771, Apoptosis-stimulating of p53 protein 1, Protein phosphatase 1 regulatory

Target Details

	subunit 13B
Gene ID:	23368, 21981
UniProt:	Q96KQ4 , Q62415
Pathways:	p53 Signaling

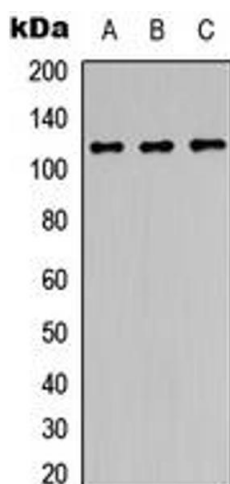
Application Details

Application Notes:	WB (1:500 - 1:1000)
Restrictions:	For Research Use only

Handling

Format:	Liquid
Buffer:	Liquid in 0.42 % Potassium phosphate, 0.87 % Sodium chloride, pH 7.3, 30 % glycerol, and 0.01 % sodium azide.
Preservative:	Sodium azide
Precaution of Use:	This product contains Sodium azide: a POISONOUS AND HAZARDOUS SUBSTANCE which should be handled by trained staff only.
Storage:	-20 °C
Storage Comment:	Shipped at 4°C. Upon delivery aliquot and store at -20°C for one year. Avoid freeze/thaw cycles.
Expiry Date:	12 months

Images



Western Blotting

Image 1. Western blot analysis of PPP1R13B expression in HEK293T (A), Raw264.7 (B), PC12 (C) whole cell lysates.