



[Go to Product page](#)

Datasheet for ABIN7300214
anti-PPP4R1 antibody (Center)

1 Image

Overview

Quantity:	100 µL
Target:	PPP4R1
Binding Specificity:	Center
Reactivity:	Human, Mouse, Rat, Monkey
Host:	Rabbit
Clonality:	Polyclonal
Conjugate:	This PPP4R1 antibody is un-conjugated
Application:	Western Blotting (WB)

Product Details

Immunogen:	KLH-conjugated synthetic peptide encompassing a sequence within the center region of human PPP4R1.
Specificity:	Recognizes endogenous levels of PPP4R1 protein.
Characteristics:	Rabbit polyclonal antibody to PPP4R1
Purification:	The antibody was purified by immunogen affinity chromatography.

Target Details

Target:	PPP4R1
Alternative Name:	PPP4R1 (PPP4R1 Products)
Background:	MEG1, PP4R1, Serine/threonine-protein phosphatase 4 regulatory subunit 1

Target Details

Gene ID: 9989, 70351, 140943

UniProt: [Q8TF05](#), [Q8K2V1](#), [Q8VI02](#)

Application Details

Application Notes: WB (1:500 - 1:1000)

Restrictions: For Research Use only

Handling

Format: Liquid

Buffer: Liquid in 0.42 % Potassium phosphate, 0.87 % Sodium chloride, pH 7.3, 30 % glycerol, and 0.01 % sodium azide.

Preservative: Sodium azide

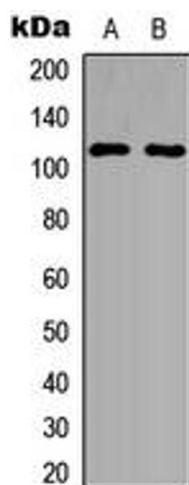
Precaution of Use: This product contains Sodium azide: a POISONOUS AND HAZARDOUS SUBSTANCE which should be handled by trained staff only.

Storage: -20 °C

Storage Comment: Shipped at 4°C. Upon delivery aliquot and store at -20°C for one year. Avoid freeze/thaw cycles.

Expiry Date: 12 months

Images



Western Blotting

Image 1. Western blot analysis of PPP4R1 expression in HEK293T (A), MCF7 (B) whole cell lysates.