



[Go to Product page](#)

Datasheet for ABIN7300252
anti-SCNM1 antibody (Center)

1 Image

Overview

Quantity:	100 µL
Target:	SCNM1
Binding Specificity:	Center
Reactivity:	Human, Rat, Mouse
Host:	Rabbit
Clonality:	Polyclonal
Conjugate:	This SCNM1 antibody is un-conjugated
Application:	Western Blotting (WB)

Product Details

Immunogen:	KLH-conjugated synthetic peptide encompassing a sequence within the center region of human SCNM1.
Specificity:	Recognizes endogenous levels of SCNM1 protein.
Characteristics:	Rabbit polyclonal antibody to SCNM1
Purification:	The antibody was purified by immunogen affinity chromatography.

Target Details

Target:	SCNM1
Alternative Name:	SCNM1 (SCNM1 Products)
Background:	Sodium channel modifier 1

Target Details

Gene ID: 100534012, 79005, 69269

UniProt: [Q9BWG6](#), [Q8K136](#)

Application Details

Application Notes: WB (1:500 - 1:1000)

Restrictions: For Research Use only

Handling

Format: Liquid

Buffer: Liquid in 0.42 % Potassium phosphate, 0.87 % Sodium chloride, pH 7.3, 30 % glycerol, and 0.01 % sodium azide.

Preservative: Sodium azide

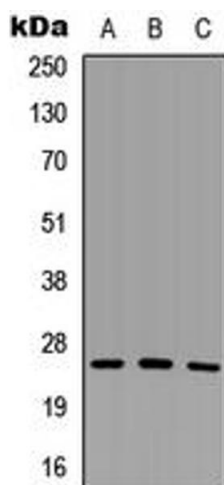
Precaution of Use: This product contains Sodium azide: a POISONOUS AND HAZARDOUS SUBSTANCE which should be handled by trained staff only.

Storage: -20 °C

Storage Comment: Shipped at 4°C. Upon delivery aliquot and store at -20°C for one year. Avoid freeze/thaw cycles.

Expiry Date: 12 months

Images



Western Blotting

Image 1. Western blot analysis of SCNM1 expression in HeLa (A), Raw264.7 (B), H9C2 (C) whole cell lysates.