

Datasheet for ABIN7300254
anti-SENK6 antibody (C-Term)[Go to Product page](#)

2 Images

Overview

Quantity:	100 µL
Target:	SENK6
Binding Specificity:	C-Term
Reactivity:	Human, Mouse, Rat
Host:	Rabbit
Clonality:	Polyclonal
Conjugate:	This SENK6 antibody is un-conjugated
Application:	Immunohistochemistry (IHC), Western Blotting (WB)

Product Details

Immunogen:	KLH-conjugated synthetic peptide encompassing a sequence within the C-term region of human SENK6.
Specificity:	Recognizes endogenous levels of SENK6 protein.
Characteristics:	Rabbit polyclonal antibody to SENK6
Purification:	The antibody was purified by immunogen affinity chromatography.

Target Details

Target:	SENK6
Alternative Name:	SENK6 (SENK6 Products)
Background:	KIAA0797, SSP1, SUSP1, Sentrin-specific protease 6, SUMO-1-specific protease 1,

Target Details

	Sentrin/SUMO-specific protease SENP6
Gene ID:	26054, 215351
UniProt:	Q9GZR1 , Q6P7W0

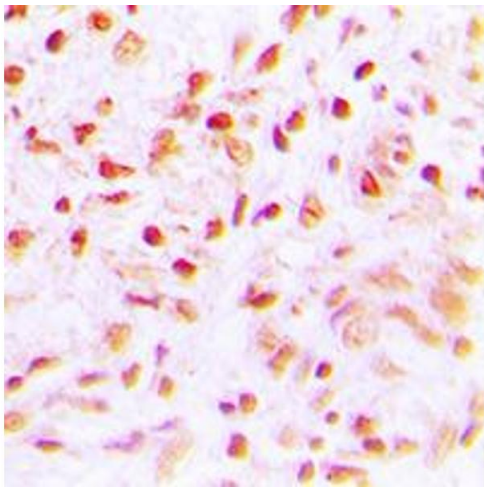
Application Details

Application Notes:	WB (1:500 - 1:1000), IH (1:100 - 1:200)
Restrictions:	For Research Use only

Handling

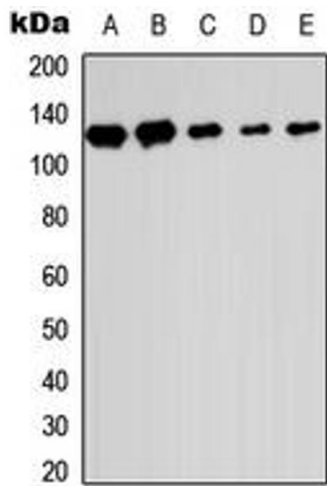
Format:	Liquid
Buffer:	Liquid in 0.42 % Potassium phosphate, 0.87 % Sodium chloride, pH 7.3, 30 % glycerol, and 0.01 % sodium azide.
Preservative:	Sodium azide
Precaution of Use:	This product contains Sodium azide: a POISONOUS AND HAZARDOUS SUBSTANCE which should be handled by trained staff only.
Storage:	-20 °C
Storage Comment:	Shipped at 4°C. Upon delivery aliquot and store at -20°C for one year. Avoid freeze/thaw cycles.
Expiry Date:	12 months

Images



Immunohistochemistry

Image 1. Immunohistochemical analysis of SENP6 staining in human lung cancer formalin fixed paraffin embedded tissue section. The section was pre-treated using heat mediated antigen retrieval with sodium citrate buffer (pH 6.0). The section was then incubated with the antibody at room temperature and detected using an HRP conjugated compact polymer system. DAB was used as the chromogen. The section was then counterstained with haematoxylin and mounted with DPX. w



Western Blotting

Image 2. Western blot analysis of SENP6 expression in HEK293T (A), Raw264.7 (B), H9C2 (C), HeLa (D), HL60 (E) whole cell lysates.