

Datasheet for ABIN7300268  
**anti-TGIF2LY antibody (C-Term)**[Go to Product page](#)

## 1 Image

## Overview

Quantity:	100 µL
Target:	TGIF2LY
Binding Specificity:	C-Term
Reactivity:	Human, Rat
Host:	Rabbit
Clonality:	Polyclonal
Conjugate:	This TGIF2LY antibody is un-conjugated
Application:	Western Blotting (WB)

## Product Details

Immunogen:	KLH-conjugated synthetic peptide encompassing a sequence within the C-term region of human TGIF2LY.
Specificity:	Recognizes endogenous levels of TGIF2LY protein.
Characteristics:	Rabbit polyclonal antibody to TGIF2LY
Purification:	The antibody was purified by immunogen affinity chromatography.

## Target Details

Target:	TGIF2LY
Alternative Name:	TGIF2LY ( <a href="#">TGIF2LY Products</a> )
Background:	TGIFLY, Homeobox protein TGIF2LY, TGF-beta-induced transcription factor 2-like protein,

## Target Details

	TGFB-induced factor 2-like protein, Y-linked, TGIF-like on the Y
Gene ID:	90655
UniProt:	<a href="#">Q8IUE0</a>

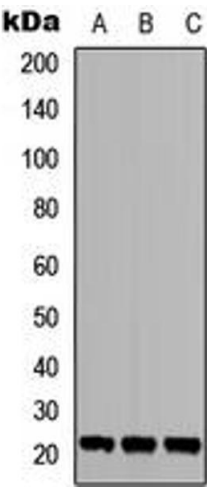
## Application Details

Application Notes:	WB (1:500 - 1:1000)
Restrictions:	For Research Use only

## Handling

Format:	Liquid
Buffer:	Liquid in 0.42 % Potassium phosphate, 0.87 % Sodium chloride, pH 7.3, 30 % glycerol, and 0.01 % sodium azide.
Preservative:	Sodium azide
Precaution of Use:	This product contains Sodium azide: a POISONOUS AND HAZARDOUS SUBSTANCE which should be handled by trained staff only.
Storage:	-20 °C
Storage Comment:	Shipped at 4°C. Upon delivery aliquot and store at -20°C for one year. Avoid freeze/thaw cycles.
Expiry Date:	12 months

## Images



### Western Blotting

**Image 1.** Western blot analysis of TGIF2LY expression in MCF7 (A), Jurkat (B), PC12 (C) whole cell lysates.