

Datasheet for ABIN7300338
anti-ALDH1A2 antibody (C-Term)



[Go to Product page](#)

3 Images

Overview

Quantity:	100 µL
Target:	ALDH1A2
Binding Specificity:	C-Term
Reactivity:	Human, Mouse, Rat, Monkey
Host:	Rabbit
Clonality:	Polyclonal
Conjugate:	This ALDH1A2 antibody is un-conjugated
Application:	Western Blotting (WB), Immunohistochemistry (IHC), Immunofluorescence (IF), Immunochromatography (IC)

Product Details

Immunogen:	KLH-conjugated synthetic peptide encompassing a sequence within the C-term region of human ALDH1A2.
Specificity:	Recognizes endogenous levels of ALDH1A2 protein.
Characteristics:	Rabbit polyclonal antibody to ALDH1A2
Purification:	The antibody was purified by immunogen affinity chromatography.

Target Details

Target:	ALDH1A2
Alternative Name:	ALDH1A2 (ALDH1A2 Products)

Target Details

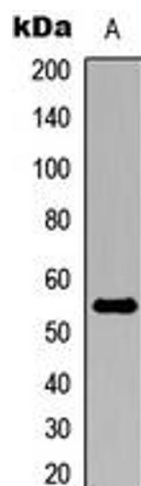
Background:	RALDH2, Retinal dehydrogenase 2, RALDH 2, RalDH2, Aldehyde dehydrogenase family 1 member A2, Retinaldehyde-specific dehydrogenase type 2, RALDH(II)
Gene ID:	8854, 19378, 116676
UniProt:	O94788 , Q62148 , Q63639
Pathways:	Retinoic Acid Receptor Signaling Pathway

Application Details

Application Notes:	WB (1:500 - 1:1000), IH (1:100 - 1:200), IF/IC (1:100 - 1:500)
Restrictions:	For Research Use only

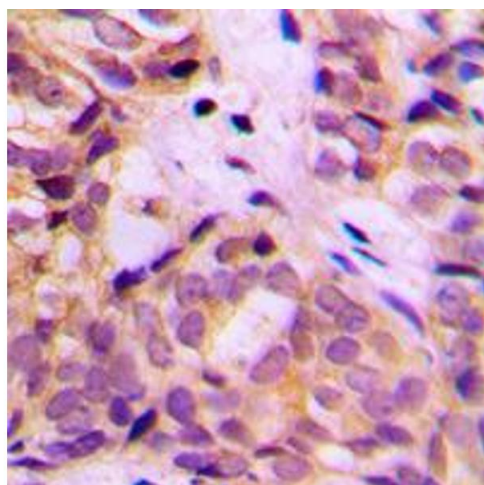
Handling

Format:	Liquid
Buffer:	Liquid in 0.42 % Potassium phosphate, 0.87 % Sodium chloride, pH 7.3, 30 % glycerol, and 0.01 % sodium azide.
Preservative:	Sodium azide
Precaution of Use:	This product contains Sodium azide: a POISONOUS AND HAZARDOUS SUBSTANCE which should be handled by trained staff only.
Storage:	-20 °C
Storage Comment:	Shipped at 4°C. Upon delivery aliquot and store at -20°C for one year. Avoid freeze/thaw cycles.
Expiry Date:	12 months



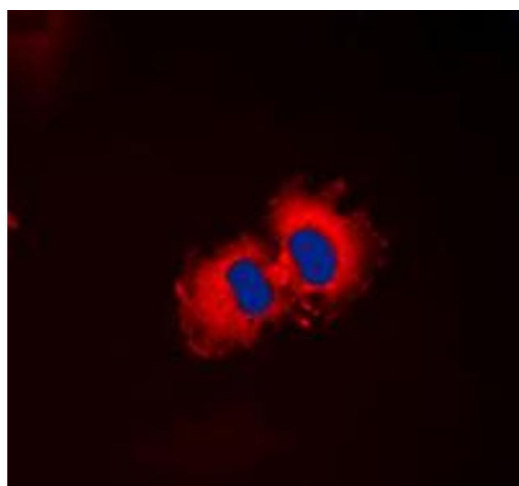
Western Blotting

Image 1. Western blot analysis of ALDH1A2 expression in MCF7 (A) whole cell lysates.



Immunohistochemistry

Image 2. Immunohistochemical analysis of ALDH1A2 staining in human breast cancer formalin fixed paraffin embedded tissue section. The section was pre-treated using heat mediated antigen retrieval with sodium citrate buffer (pH 6.0). The section was then incubated with the antibody at room temperature and detected using an HRP conjugated compact polymer system. DAB was used as the chromogen. The section was then counterstained with haematoxylin and mounted with DPX. w



Immunofluorescence

Image 3. Immunofluorescent analysis of ALDH1A2 staining in HepG2 cells. Formalin-fixed cells were permeabilized with 0.1% Triton X-100 in TBS for 5-10 minutes and blocked with 3% BSA-PBS for 30 minutes at room temperature. Cells were probed with the primary antibody in 3% BSA-PBS and incubated overnight at 4 °C in a hidified chamber. Cells were washed with PBST and incubated with a DyLight 594-conjugated secondary antibody (red) in PBS at room temperature in the dark. DAPI was used to stain the cell nuclei (blue).