

Datasheet for ABIN7300342  
**anti-ALDOC antibody (Center)**[Go to Product page](#)

## 2 Images

## Overview

Quantity:	100 µL
Target:	ALDOC
Binding Specificity:	Center
Reactivity:	Human, Mouse, Rat, Pig, Dog, Rabbit, Monkey
Host:	Rabbit
Clonality:	Polyclonal
Conjugate:	This ALDOC antibody is un-conjugated
Application:	Western Blotting (WB), Immunohistochemistry (IHC)

## Product Details

Immunogen:	KLH-conjugated synthetic peptide encompassing a sequence within the center region of human ALDOC.
Specificity:	Recognizes endogenous levels of ALDOC protein.
Characteristics:	Rabbit polyclonal antibody to ALDOC
Purification:	The antibody was purified by immunogen affinity chromatography.

## Target Details

Target:	ALDOC
Alternative Name:	ALDOC ( <a href="#">ALDOC Products</a> )
Background:	ALDC, Fructose-bisphosphate aldolase C, Brain-type aldolase

## Target Details

Gene ID:	230, 11676, 24191
UniProt:	<a href="#">P09972</a> , <a href="#">P05063</a> , <a href="#">P09117</a>

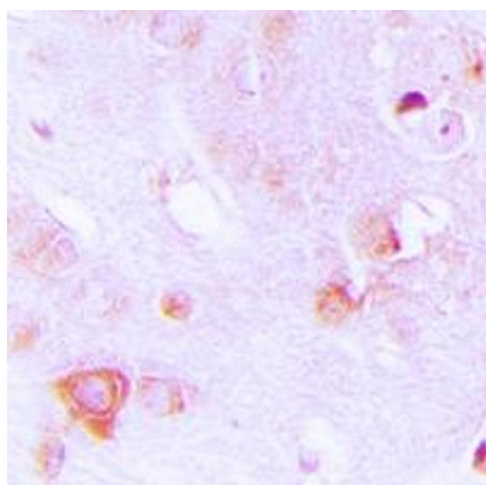
## Application Details

Application Notes:	WB (1:500 - 1:1000), IH (1:100 - 1:200)
Restrictions:	For Research Use only

## Handling

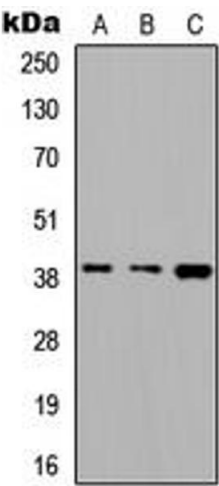
Format:	Liquid
Buffer:	Liquid in 0.42 % Potassium phosphate, 0.87 % Sodium chloride, pH 7.3, 30 % glycerol, and 0.01 % sodium azide.
Preservative:	Sodium azide
Precaution of Use:	This product contains Sodium azide: a POISONOUS AND HAZARDOUS SUBSTANCE which should be handled by trained staff only.
Storage:	-20 °C
Storage Comment:	Shipped at 4°C. Upon delivery aliquot and store at -20°C for one year. Avoid freeze/thaw cycles.
Expiry Date:	12 months

## Images



### Immunohistochemistry

**Image 1.** Immunohistochemical analysis of ALDOC staining in human brain formalin fixed paraffin embedded tissue section. The section was pre-treated using heat mediated antigen retrieval with sodium citrate buffer (pH 6.0). The section was then incubated with the antibody at room temperature and detected using an HRP conjugated compact polymer system. DAB was used as the chromogen. The section was then counterstained with haematoxylin and mounted with DPX. w



Western Blotting

**Image 2.** Western blot analysis of ALDOC expression in A549 (A), PC12 (B), Raw264.7 (C) whole cell lysates.