

Datasheet for ABIN7300372
anti-Arhgef9 antibody (C-Term)[Go to Product page](#)

2 Images

Overview

Quantity:	100 µL
Target:	Arhgef9
Binding Specificity:	C-Term
Reactivity:	Human, Rat, Mouse, Cow
Host:	Rabbit
Clonality:	Polyclonal
Conjugate:	This Arhgef9 antibody is un-conjugated
Application:	Immunohistochemistry (IHC), Western Blotting (WB)

Product Details

Immunogen:	KLH-conjugated synthetic peptide encompassing a sequence within the C-term region of human ARHGEF9.
Specificity:	Recognizes endogenous levels of ARHGEF9 protein.
Characteristics:	Rabbit polyclonal antibody to ARHGEF9
Purification:	The antibody was purified by immunogen affinity chromatography.

Target Details

Target:	Arhgef9
Alternative Name:	ARHGEF9 (Arhgef9 Products)
Background:	ARHDH9, KIAA0424, Rho guanine nucleotide exchange factor 9, Collybistin, PEM-2 homolog,

Target Details

	Rac/Cdc42 guanine nucleotide exchange factor 9
Gene ID:	23229, 236915, 66013
UniProt:	O43307 , Q3UTH8 , Q9QX73
Pathways:	Neurotrophin Signaling Pathway

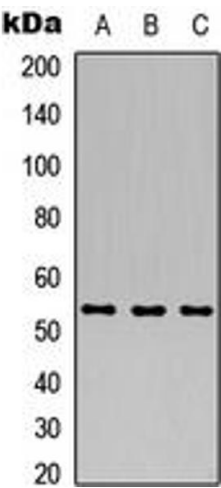
Application Details

Application Notes:	WB (1:500 - 1:1000), IH (1:100 - 1:200)
Restrictions:	For Research Use only

Handling

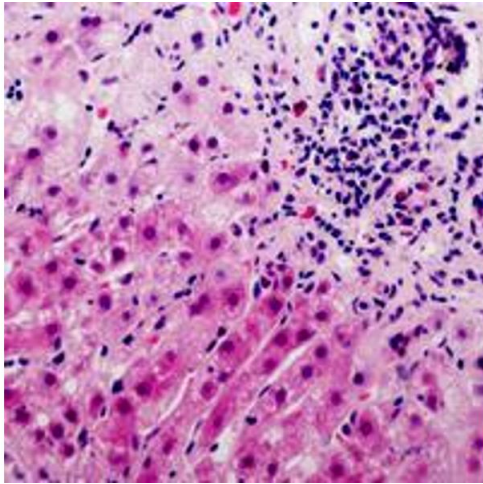
Format:	Liquid
Buffer:	Liquid in 0.42 % Potassium phosphate, 0.87 % Sodium chloride, pH 7.3, 30 % glycerol, and 0.01 % sodium azide.
Preservative:	Sodium azide
Precaution of Use:	This product contains Sodium azide: a POISONOUS AND HAZARDOUS SUBSTANCE which should be handled by trained staff only.
Storage:	-20 °C
Storage Comment:	Shipped at 4°C. Upon delivery aliquot and store at -20°C for one year. Avoid freeze/thaw cycles.
Expiry Date:	12 months

Images



Western Blotting

Image 1. Western blot analysis of ARHGEF9 expression in HEK293T (A), Raw264.7 (B), PC12 (C) whole cell lysates.



Immunohistochemistry

Image 2. Immunohistochemical analysis of ARHGEF9 staining in human liver cancer formalin fixed paraffin embedded tissue section. The section was pre-treated using heat mediated antigen retrieval with sodium citrate buffer (pH 6.0). The section was then incubated with the antibody at room temperature and detected using an HRP conjugated compact polymer system. DAB was used as the chromogen. The section was then counterstained with haematoxylin and mounted with DPX. w