

Datasheet for ABIN7300392
anti-ATP6V1G3i antibody (Center)[Go to Product page](#)

1 Image

Overview

Quantity:	100 µL
Target:	ATP6V1G3i (ATP6V1G3)
Binding Specificity:	Center
Reactivity:	Human, Mouse, Rat
Host:	Rabbit
Clonality:	Polyclonal
Conjugate:	This ATP6V1G3i antibody is un-conjugated
Application:	Western Blotting (WB)

Product Details

Immunogen:	KLH-conjugated synthetic peptide encompassing a sequence within the center region of human ATP6V1G3.
Specificity:	Recognizes endogenous levels of ATP6V1G3 protein.
Characteristics:	Rabbit polyclonal antibody to ATP6V1G3
Purification:	The antibody was purified by immunogen affinity chromatography.

Target Details

Target:	ATP6V1G3i (ATP6V1G3)
Alternative Name:	ATP6V1G3 (ATP6V1G3 Products)
Background:	ATP6G3, V-type proton ATPase subunit G 3, V-ATPase subunit G 3, V-ATPase 13 kDa subunit 3,

Target Details

	Vacuolar proton pump subunit G 3
Gene ID:	127124, 338375
UniProt:	Q96LB4 , Q8BMC1
Pathways:	Transition Metal Ion Homeostasis , Proton Transport

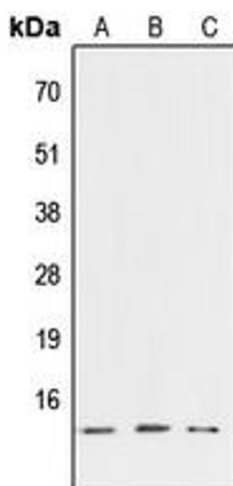
Application Details

Application Notes:	WB (1:500 - 1:1000)
Restrictions:	For Research Use only

Handling

Format:	Liquid
Buffer:	Liquid in 0.42 % Potassium phosphate, 0.87 % Sodium chloride, pH 7.3, 30 % glycerol, and 0.01 % sodium azide.
Preservative:	Sodium azide
Precaution of Use:	This product contains Sodium azide: a POISONOUS AND HAZARDOUS SUBSTANCE which should be handled by trained staff only.
Storage:	-20 °C
Storage Comment:	Shipped at 4°C. Upon delivery aliquot and store at -20°C for one year. Avoid freeze/thaw cycles.
Expiry Date:	12 months

Images



Western Blotting

Image 1. Western blot analysis of ATP6V1G3 expression in HEK293T (A), NIH3T3 (B), PC12 (C) whole cell lysates.