

Datasheet for ABIN7300420
anti-BIM antibody (pSer69)



[Go to Product page](#)

3 Images

Overview

Quantity:	100 µL
Target:	BIM (BCL2L11)
Binding Specificity:	pSer69
Reactivity:	Human, Mouse, Rat, Cow, Sheep
Host:	Rabbit
Clonality:	Polyclonal
Conjugate:	This BIM antibody is un-conjugated
Application:	Western Blotting (WB), Immunohistochemistry (IHC), Immunofluorescence (IF), Immunochromatography (IC)

Product Details

Immunogen:	KLH-conjugated synthetic peptide encompassing a sequence within the center region of human BIM.
Specificity:	Recognizes endogenous levels of BIM (pS69) protein.
Characteristics:	Rabbit polyclonal antibody to BIM (pS69)
Purification:	The antibody was purified by immunogen affinity chromatography.

Target Details

Target:	BIM (BCL2L11)
Alternative Name:	BIM (BCL2L11 Products)

Target Details

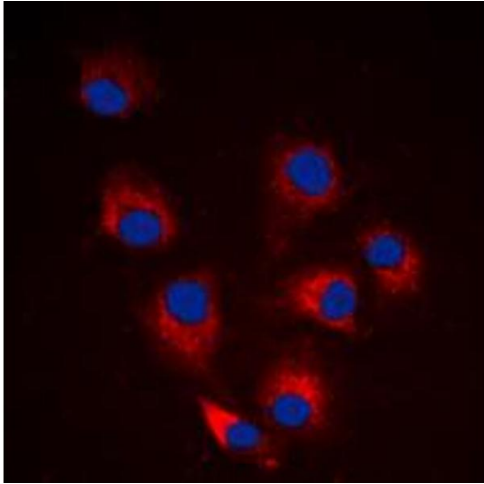
Background:	BIM, Bcl-2-like protein 11, Bcl2-L-11, Bcl2-interacting mediator of cell death
Gene ID:	10018, 12125, 64547
UniProt:	O43521 , O54918 , O88498
Pathways:	PI3K-Akt Signaling , Neurotrophin Signaling Pathway , Tube Formation , Positive Regulation of Endopeptidase Activity

Application Details

Application Notes:	WB (1:500 - 1:1000), IH (1:100 - 1:200), IF/IC (1:100 - 1:500)
Restrictions:	For Research Use only

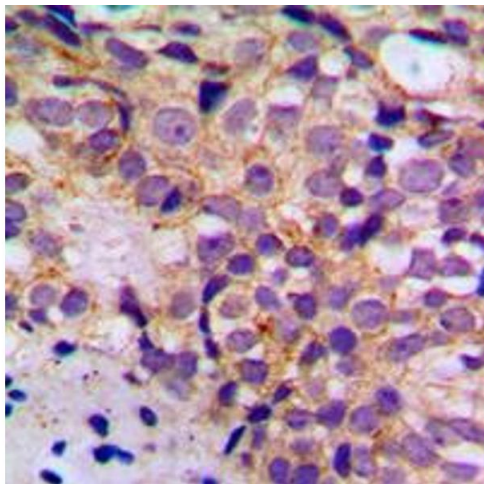
Handling

Format:	Liquid
Buffer:	Liquid in 0.42 % Potassium phosphate, 0.87 % Sodium chloride, pH 7.3, 30 % glycerol, and 0.01 % sodium azide.
Preservative:	Sodium azide
Precaution of Use:	This product contains Sodium azide: a POISONOUS AND HAZARDOUS SUBSTANCE which should be handled by trained staff only.
Storage:	-20 °C
Storage Comment:	Shipped at 4°C. Upon delivery aliquot and store at -20°C for one year. Avoid freeze/thaw cycles.
Expiry Date:	12 months



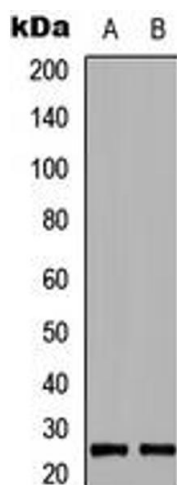
Immunofluorescence

Image 1. Immunofluorescent analysis of BIM (pS69) staining in HeLa cells. Formalin-fixed cells were permeabilized with 0.1% Triton X-100 in TBS for 5-10 minutes and blocked with 3% BSA-PBS for 30 minutes at room temperature. Cells were probed with the primary antibody in 3% BSA-PBS and incubated overnight at 4 °C in a humidified chamber. Cells were washed with PBST and incubated with a DyLight 594-conjugated secondary antibody (red) in PBS at room temperature in the dark. DAPI was used to stain the cell nuclei (blue).



Immunohistochemistry

Image 2. Immunohistochemical analysis of BIM (pS69) staining in human breast cancer formalin fixed paraffin embedded tissue section. The section was pre-treated using heat mediated antigen retrieval with sodium citrate buffer (pH 6.0). The section was then incubated with the antibody at room temperature and detected using an HRP conjugated compact polymer system. DAB was used as the chromogen. The section was then counterstained with haematoxylin and mounted with DPX. w



Western Blotting

Image 3. Western blot analysis of BIM (pS69) expression in HEK293T (A), Raw264.7 (B) whole cell lysates.