

Datasheet for ABIN7300436

anti-Calmodulin 1 antibody (pSer80, pSer82)[Go to Product page](#)**3** Images

Overview

Quantity:	100 µL
Target:	Calmodulin 1 (Calm1)
Binding Specificity:	pSer80, pSer82
Reactivity:	Human, Rat, Mouse, Chicken, Cow, Zebrafish (Danio rerio), Rabbit, Sheep
Host:	Rabbit
Clonality:	Polyclonal
Conjugate:	This Calmodulin 1 antibody is un-conjugated
Application:	Western Blotting (WB), Immunohistochemistry (IHC), Immunofluorescence (IF), Immunochromatography (IC)

Product Details

Immunogen:	KLH-conjugated synthetic peptide encompassing a sequence within the center region of human Calmodulin.
Specificity:	Recognizes endogenous levels of Calmodulin (pT80/S82) protein.
Characteristics:	Rabbit polyclonal antibody to Calmodulin (pT80/S82)
Purification:	The antibody was purified by immunogen affinity chromatography.

Target Details

Target:	Calmodulin 1 (Calm1)
Alternative Name:	Calmodulin (Calm1 Products)

Target Details

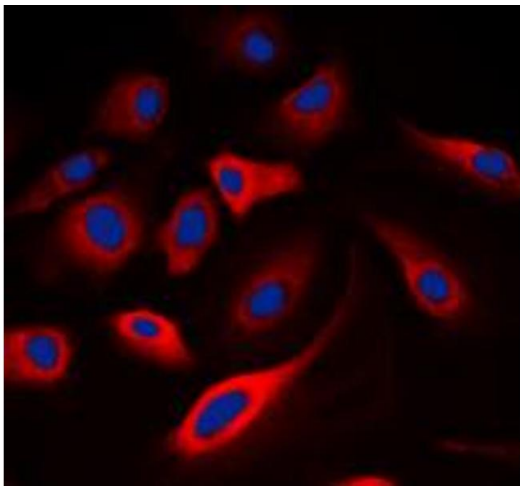
Background:	CALM, CAM, CAM1, CAM2, CAMB, CALML2, CAM3, CAMC, CAMIII, Calmodulin, CaM
Gene ID:	801, 805, 808
UniProt:	P62158 , P62204 , P62161
Pathways:	cAMP Metabolic Process , Myometrial Relaxation and Contraction , G-protein mediated Events , Interaction of EGFR with phospholipase C-gamma , Phototransduction , BCR Signaling

Application Details

Application Notes:	WB (1:500 - 1:1000), IH (1:100 - 1:200), IF/IC (1:100 - 1:500)
Restrictions:	For Research Use only

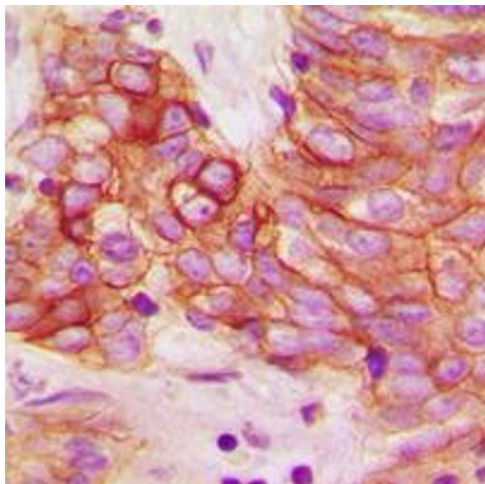
Handling

Format:	Liquid
Buffer:	Liquid in 0.42 % Potassium phosphate, 0.87 % Sodium chloride, pH 7.3, 30 % glycerol, and 0.01 % sodium azide.
Preservative:	Sodium azide
Precaution of Use:	This product contains Sodium azide: a POISONOUS AND HAZARDOUS SUBSTANCE which should be handled by trained staff only.
Storage:	-20 °C
Storage Comment:	Shipped at 4°C. Upon delivery aliquot and store at -20°C for one year. Avoid freeze/thaw cycles.
Expiry Date:	12 months



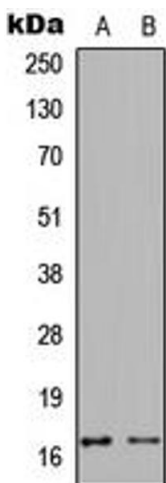
Immunofluorescence

Image 1. Immunofluorescent analysis of Calmodulin (pT80/S82) staining in A549 cells. Formalin-fixed cells were permeabilized with 0.1% Triton X-100 in TBS for 5-10 minutes and blocked with 3% BSA-PBS for 30 minutes at room temperature. Cells were probed with the primary antibody in 3% BSA-PBS and incubated overnight at 4 °C in a humidified chamber. Cells were washed with PBST and incubated with a DyLight 594-conjugated secondary antibody (red) in PBS at room temperature in the dark. DAPI was used to stain the cell nuclei (blue).



Immunohistochemistry

Image 2. Immunohistochemical analysis of Calmodulin (pT80/S82) staining in human breast cancer formalin fixed paraffin embedded tissue section. The section was pre-treated using heat mediated antigen retrieval with sodium citrate buffer (pH 6.0). The section was then incubated with the antibody at room temperature and detected using an HRP conjugated compact polymer system. DAB was used as the chromogen. The section was then counterstained with haematoxylin and mounted with DPX. w



Western Blotting

Image 3. Western blot analysis of Calmodulin (pT80/S82) expression in MCF7 TNF-treated (A), NIH3T3 TNF-treated (B) whole cell lysates.