

Datasheet for ABIN7300440

anti-CaMK2 alpha/delta antibody (pSer286)[Go to Product page](#)**3** Images

Overview

Quantity:	100 µL
Target:	CaMK2 alpha/delta
Binding Specificity:	pSer286
Reactivity:	Human, Mouse, Rat, Pig, Chicken, Cow, Monkey, Rabbit
Host:	Rabbit
Clonality:	Polyclonal
Conjugate:	This CaMK2 alpha/delta antibody is un-conjugated
Application:	Immunofluorescence (IF), Immunohistochemistry (IHC), Western Blotting (WB), Immunochromatography (IC)

Product Details

Immunogen:	KLH-conjugated synthetic peptide encompassing a sequence within the center region of human CaMK2 alpha/delta.
Specificity:	Recognizes endogenous levels of CaMK2 alpha/delta (pT286) protein.
Characteristics:	Rabbit polyclonal antibody to CaMK2 alpha/delta (pT286)
Purification:	The antibody was purified by immunogen affinity chromatography.

Target Details

Target:	CaMK2 alpha/delta
Abstract:	CaMK2 alpha/delta Products

Target Details

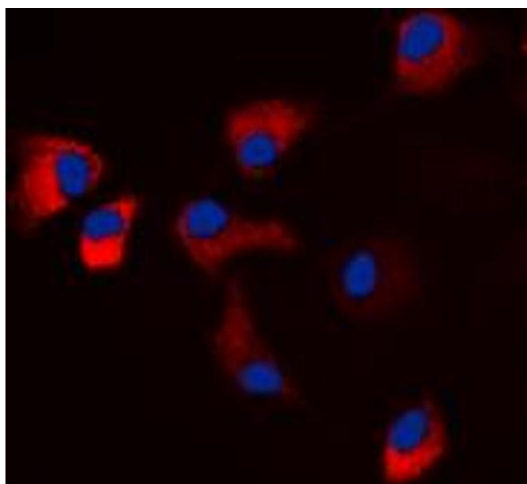
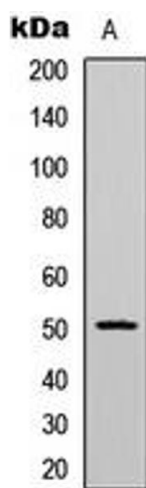
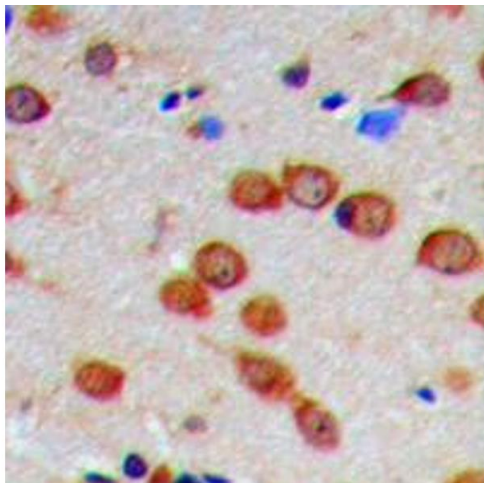
Background:	CAMK2A, CAMKA, KIAA0968, Calcium/calmodulin-dependent protein kinase type II subunit alpha, CaM kinase II subunit alpha, CaMK-II subunit alpha, CAMK2D, CAMKD, Calcium/calmodulin-dependent protein kinase type II subunit delta, CaM kinase II subunit delta, CaMK-II subunit delta
Gene ID:	815, 817, 12322
UniProt:	Q9UQM7 , Q13557 , P11798 , Q6PHZ2 , P11275 , P15791

Application Details

Application Notes:	WB (1:500 - 1:1000), IH (1:100 - 1:200), IF/IC (1:100 - 1:500)
Restrictions:	For Research Use only

Handling

Format:	Liquid
Buffer:	Liquid in 0.42 % Potassium phosphate, 0.87 % Sodium chloride, pH 7.3, 30 % glycerol, and 0.01 % sodium azide.
Preservative:	Sodium azide
Precaution of Use:	This product contains Sodium azide: a POISONOUS AND HAZARDOUS SUBSTANCE which should be handled by trained staff only.
Storage:	-20 °C
Storage Comment:	Shipped at 4°C. Upon delivery aliquot and store at -20°C for one year. Avoid freeze/thaw cycles.
Expiry Date:	12 months



Immunohistochemistry

Image 1. Immunohistochemical analysis of CaMK2 alpha/delta (pT286) staining in human brain formalin fixed paraffin embedded tissue section. The section was pre-treated using heat mediated antigen retrieval with sodium citrate buffer (pH 6.0). The section was then incubated with the antibody at room temperature and detected using an HRP conjugated compact polymer system. DAB was used as the chromogen. The section was then counterstained with haematoxylin and mounted with DPX. w

Western Blotting

Image 2. Western blot analysis of CaMK2 alpha/delta (pT286) expression in HeLa (A) whole cell lysates.

Immunofluorescence

Image 3. Immunofluorescent analysis of CaMK2 alpha/delta (pT286) staining in HeLa cells. Formalin-fixed cells were permeabilized with 0.1% Triton X-100 in TBS for 5-10 minutes and blocked with 3% BSA-PBS for 30 minutes at room temperature. Cells were probed with the primary antibody in 3% BSA-PBS and incubated overnight at 4 °C in a humidified chamber. Cells were washed with PBST and incubated with a DyLight 594-conjugated secondary antibody (red) in PBS at room temperature in the dark. DAPI was used to stain the cell nuclei (blue).