



[Go to Product page](#)

Datasheet for ABIN7300446
anti-CCL11 antibody (Center)

1 Image

Overview

Quantity:	100 µL
Target:	CCL11
Binding Specificity:	Center
Reactivity:	Human, Mouse, Rat, Monkey
Host:	Rabbit
Clonality:	Polyclonal
Conjugate:	This CCL11 antibody is un-conjugated
Application:	Western Blotting (WB)

Product Details

Immunogen:	KLH-conjugated synthetic peptide encompassing a sequence within the center region of human CCL11.
Specificity:	Recognizes endogenous levels of CCL11 protein.
Characteristics:	Rabbit polyclonal antibody to CCL11
Purification:	The antibody was purified by immunogen affinity chromatography.

Target Details

Target:	CCL11
Alternative Name:	CCL11 (CCL11 Products)
Background:	SCYA11, Eotaxin, C-C motif chemokine 11, Eosinophil chemotactic protein, Small-inducible

Target Details

cytokine A11

Gene ID: 6356, 20292, 29397

UniProt: [P51671](#), [P48298](#), [P97545](#)

Pathways: [Regulation of Actin Filament Polymerization](#), [The Global Phosphorylation Landscape of SARS-CoV-2 Infection](#)

Application Details

Application Notes: WB (1:500 - 1:1000)

Restrictions: For Research Use only

Handling

Format: Liquid

Buffer: Liquid in 0.42 % Potassium phosphate, 0.87 % Sodium chloride, pH 7.3, 30 % glycerol, and 0.01 % sodium azide.

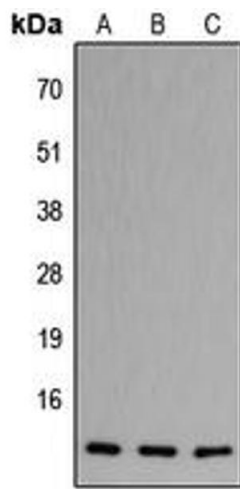
Preservative: Sodium azide

Precaution of Use: This product contains Sodium azide: a POISONOUS AND HAZARDOUS SUBSTANCE which should be handled by trained staff only.

Storage: -20 °C

Storage Comment: Shipped at 4°C. Upon delivery aliquot and store at -20°C for one year. Avoid freeze/thaw cycles.

Expiry Date: 12 months



Western Blotting

Image 1. Western blot analysis of CCL11 expression in HeLa (A), Raw264.7 (B), PC12 (C) whole cell lysates.