

Datasheet for ABIN7300454
anti-Centriolin antibody (C-Term)[Go to Product page](#)

2 Images

Overview

Quantity:	100 µL
Target:	Centriolin (CNTRL)
Binding Specificity:	C-Term
Reactivity:	Human, Monkey
Host:	Rabbit
Clonality:	Polyclonal
Conjugate:	This Centriolin antibody is un-conjugated
Application:	Western Blotting (WB), Immunohistochemistry (IHC)

Product Details

Immunogen:	KLH-conjugated synthetic peptide encompassing a sequence within the C-term region of human CEP110.
Specificity:	Recognizes endogenous levels of CEP110 protein.
Characteristics:	Rabbit polyclonal antibody to CEP110
Purification:	The antibody was purified by immunogen affinity chromatography.

Target Details

Target:	Centriolin (CNTRL)
Alternative Name:	CEP110 (CNTRL Products)
Background:	CEP110, CP110, KIAA0419, Centriolar coiled-coil protein of 110 kDa, Centrosomal protein of

Target Details

	110 kDa, CP110, Cep110
Gene ID:	9738, 101565
UniProt:	O43303 , Q7TSH4
Pathways:	M Phase , SARS-CoV-2 Protein Interactome

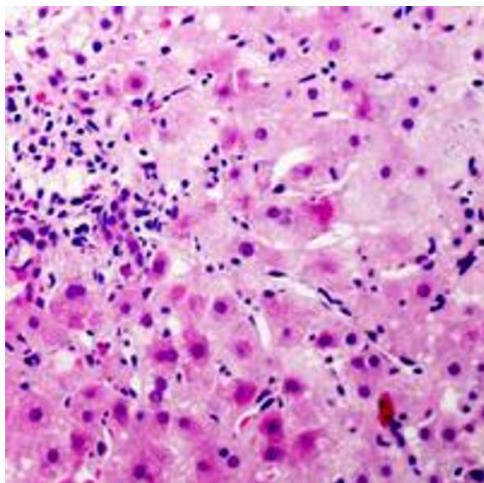
Application Details

Application Notes:	WB (1:500 - 1:1000), IH (1:100 - 1:200)
Restrictions:	For Research Use only

Handling

Format:	Liquid
Buffer:	Liquid in 0.42 % Potassium phosphate, 0.87 % Sodium chloride, pH 7.3, 30 % glycerol, and 0.01 % sodium azide.
Preservative:	Sodium azide
Precaution of Use:	This product contains Sodium azide: a POISONOUS AND HAZARDOUS SUBSTANCE which should be handled by trained staff only.
Storage:	-20 °C
Storage Comment:	Shipped at 4°C. Upon delivery aliquot and store at -20°C for one year. Avoid freeze/thaw cycles.
Expiry Date:	12 months

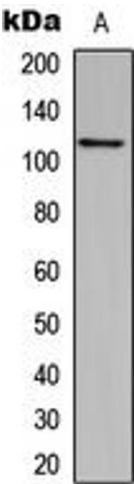
Images



Immunohistochemistry

Image 1. Immunohistochemical analysis of CEP110 staining in human liver cancer formalin fixed paraffin embedded tissue section. The section was pre-treated using heat mediated antigen retrieval with sodium citrate buffer (pH 6.0). The section was then incubated with the antibody at room temperature and detected using an HRP conjugated compact polymer system. DAB was used as the chromogen. The section was then counterstained with

haematoxylin and mounted with DPX. w



Western Blotting

Image 2. Western blot analysis of CEP110 expression in MCF7 (A) whole cell lysates.