

Datasheet for ABIN7300534
anti-CLOCK antibody (Center)[Go to Product page](#)

2 Images

Overview

Quantity:	100 µL
Target:	CLOCK
Binding Specificity:	Center
Reactivity:	Human, Mouse, Rat, Pig, Dog, Chicken
Host:	Rabbit
Clonality:	Polyclonal
Conjugate:	This CLOCK antibody is un-conjugated
Application:	Western Blotting (WB), Immunohistochemistry (IHC)

Product Details

Immunogen:	KLH-conjugated synthetic peptide encompassing a sequence within the center region of human CLOCK.
Specificity:	Recognizes endogenous levels of CLOCK protein.
Characteristics:	Rabbit polyclonal antibody to CLOCK
Purification:	The antibody was purified by immunogen affinity chromatography.

Target Details

Target:	CLOCK
Alternative Name:	CLOCK (CLOCK Products)
Background:	BHLHE8, KIAA0334, Circadian locomoter output cycles protein kaput, hCLOCK, Class E basic

Target Details

	helix-loop-helix protein 8, bHLHe8
Gene ID:	9575, 12753, 60447
UniProt:	O15516 , O08785 , Q9WVS9
Pathways:	Regulation of Lipid Metabolism by PPARalpha , Photoperiodism

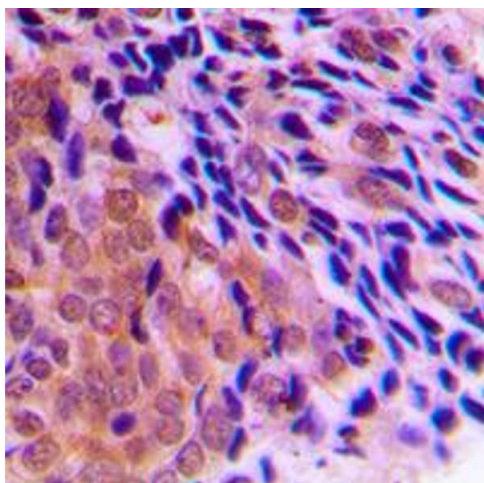
Application Details

Application Notes:	WB (1:500 - 1:1000), IH (1:100 - 1:200)
Restrictions:	For Research Use only

Handling

Format:	Liquid
Buffer:	Liquid in 0.42 % Potassium phosphate, 0.87 % Sodium chloride, pH 7.3, 30 % glycerol, and 0.01 % sodium azide.
Preservative:	Sodium azide
Precaution of Use:	This product contains Sodium azide: a POISONOUS AND HAZARDOUS SUBSTANCE which should be handled by trained staff only.
Storage:	-20 °C
Storage Comment:	Shipped at 4°C. Upon delivery aliquot and store at -20°C for one year. Avoid freeze/thaw cycles.
Expiry Date:	12 months

Images



Immunohistochemistry

Image 1. Immunohistochemical analysis of CLOCK staining in human prostate cancer formalin fixed paraffin embedded tissue section. The section was pre-treated using heat mediated antigen retrieval with sodium citrate buffer (pH 6.0). The section was then incubated with the antibody at room temperature and detected using an HRP conjugated compact polymer system. DAB was used as the chromogen. The section was then counterstained with

haematoxylin and mounted with DPX. w

Western Blotting

Image 2. Western blot analysis of CLOCK expression in HeLa (A), HEK293T (B), NIH3T3 (C) whole cell lysates.

