

Datasheet for ABIN7300542
anti-COL2A1 antibody (N-Term)



[Go to Product page](#)

2 Images

Overview

| | |
|----------------------|---|
| Quantity: | 100 µL |
| Target: | COL2A1 |
| Binding Specificity: | N-Term |
| Reactivity: | Human, Mouse, Rat, Rabbit, Cow, Dog, Pig |
| Host: | Rabbit |
| Clonality: | Polyclonal |
| Conjugate: | This COL2A1 antibody is un-conjugated |
| Application: | Western Blotting (WB), Immunohistochemistry (IHC) |

Product Details

| | |
|------------------|--|
| Immunogen: | KLH-conjugated synthetic peptide encompassing a sequence within the N-term region of human Collagen 2 alpha 1. |
| Specificity: | Recognizes endogenous levels of Collagen 2 alpha 1 protein. |
| Characteristics: | Rabbit polyclonal antibody to Collagen 2 alpha 1 |
| Purification: | The antibody was purified by immunogen affinity chromatography. |

Target Details

| | |
|-------------------|--|
| Target: | COL2A1 |
| Alternative Name: | Collagen 2 alpha 1 (COL2A1 Products) |
| Background: | Collagen alpha-1(II) chain, Alpha-1 type II collagen |

Target Details

| | |
|-----------|---|
| Gene ID: | 1280, 12824, 25412 |
| UniProt: | P02458 , P28481 , P05539 |
| Pathways: | Sensory Perception of Sound , Growth Factor Binding |

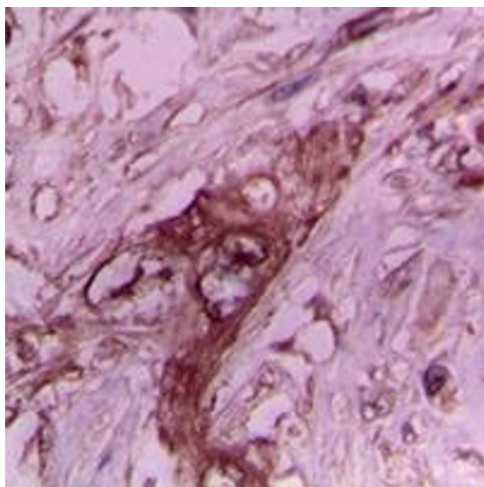
Application Details

| | |
|--------------------|---|
| Application Notes: | WB (1:500 - 1:1000), IH (1:100 - 1:200) |
| Restrictions: | For Research Use only |

Handling

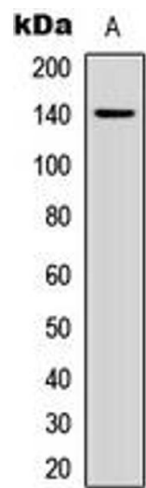
| | |
|--------------------|--|
| Format: | Liquid |
| Buffer: | Liquid in 0.42 % Potassium phosphate, 0.87 % Sodium chloride, pH 7.3, 30 % glycerol, and 0.01 % sodium azide. |
| Preservative: | Sodium azide |
| Precaution of Use: | This product contains Sodium azide: a POISONOUS AND HAZARDOUS SUBSTANCE which should be handled by trained staff only. |
| Storage: | -20 °C |
| Storage Comment: | Shipped at 4°C. Upon delivery aliquot and store at -20°C for one year. Avoid freeze/thaw cycles. |
| Expiry Date: | 12 months |

Images



Immunohistochemistry

Image 1. Immunohistochemical analysis of Collagen 2 alpha 1 staining in human breast cancer formalin fixed paraffin embedded tissue section. The section was pre-treated using heat mediated antigen retrieval with sodium citrate buffer (pH 6.0). The section was then incubated with the antibody at room temperature and detected using an HRP conjugated compact polymer system. DAB was used as the chromogen. The section was then counterstained with haematoxylin and mounted with DPX. w



Western Blotting

Image 2. Western blot analysis of Collagen 2 alpha 1 expression in MCF7 (A) whole cell lysates.