

Datasheet for ABIN7300566  
**anti-CREM antibody (Center)**

## 2 Images

[Go to Product page](#)

## Overview

Quantity:	100 µL
Target:	CREM
Binding Specificity:	Center
Reactivity:	Human, Mouse, Rat, Cow, Dog, Pig
Host:	Rabbit
Clonality:	Polyclonal
Conjugate:	This CREM antibody is un-conjugated
Application:	Western Blotting (WB), Immunohistochemistry (IHC)

## Product Details

Immunogen:	KLH-conjugated synthetic peptide encompassing a sequence within the center region of human ICER.
Specificity:	Recognizes endogenous levels of ICER protein.
Characteristics:	Rabbit polyclonal antibody to ICER
Purification:	The antibody was purified by immunogen affinity chromatography.

## Target Details

Target:	CREM
Alternative Name:	ICER ( <a href="#">CREM Products</a> )
Background:	CAMP-responsive element modulator, Inducible cAMP early repressor, ICER

## Target Details

Gene ID:	1390, 12916, 25620
UniProt:	<a href="#">Q03060</a> , <a href="#">P27699</a> , <a href="#">Q03061</a>
Pathways:	<a href="#">Retinoic Acid Receptor Signaling Pathway</a>

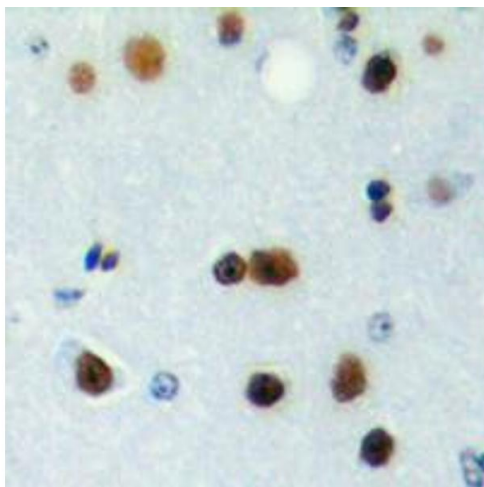
## Application Details

Application Notes:	WB (1:500 - 1:1000), IH (1:100 - 1:200)
Restrictions:	For Research Use only

## Handling

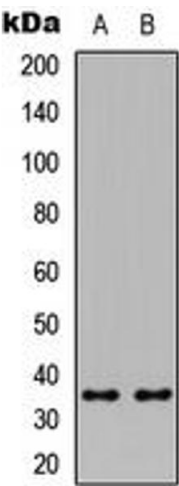
Format:	Liquid
Buffer:	Liquid in 0.42 % Potassium phosphate, 0.87 % Sodium chloride, pH 7.3, 30 % glycerol, and 0.01 % sodium azide.
Preservative:	Sodium azide
Precaution of Use:	This product contains Sodium azide: a POISONOUS AND HAZARDOUS SUBSTANCE which should be handled by trained staff only.
Storage:	-20 °C
Storage Comment:	Shipped at 4°C. Upon delivery aliquot and store at -20°C for one year. Avoid freeze/thaw cycles.
Expiry Date:	12 months

## Images



### Immunohistochemistry

**Image 1.** Immunohistochemical analysis of ICER staining in human brain formalin fixed paraffin embedded tissue section. The section was pre-treated using heat mediated antigen retrieval with sodium citrate buffer (pH 6.0). The section was then incubated with the antibody at room temperature and detected using an HRP conjugad compact polymer system. DAB was used as the chromogen. The section was then counterstained with haematoxylin and mounted with DPX.



Western Blotting

**Image 2.** Western blot analysis of ICER expression in HeLa (A), Raw264.7 (B) whole cell lysates.