

Datasheet for ABIN7300584  
**anti-CTBP1 antibody (C-Term)**



[Go to Product page](#)

3 Images

## Overview

Quantity:	100 µL
Target:	CTBP1
Binding Specificity:	C-Term
Reactivity:	Human, Mouse, Rat, Pig
Host:	Rabbit
Clonality:	Polyclonal
Conjugate:	This CTBP1 antibody is un-conjugated
Application:	Western Blotting (WB), Immunohistochemistry (IHC), Immunofluorescence (IF), Immunochromatography (IC)

## Product Details

Immunogen:	KLH-conjugated synthetic peptide encompassing a sequence within the C-term region of human CTBP1.
Specificity:	Recognizes endogenous levels of CTBP1 protein.
Characteristics:	Rabbit polyclonal antibody to CTBP1
Purification:	The antibody was purified by immunogen affinity chromatography.

## Target Details

Target:	CTBP1
Alternative Name:	CTBP1 ( <a href="#">CTBP1 Products</a> )

### Target Details

Background:	CTBP, C-terminal-binding protein 1, CtBP1
Gene ID:	1487, 13016, 29382
UniProt:	<a href="#">Q13363</a> , <a href="#">O88712</a> , <a href="#">Q9Z2F5</a>
Pathways:	<a href="#">Retinoic Acid Receptor Signaling Pathway</a>

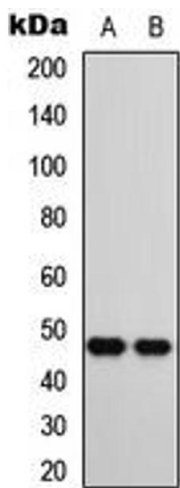
### Application Details

Application Notes:	WB (1:500 - 1:1000), IH (1:100 - 1:200), IF/IC (1:100 - 1:500)
Restrictions:	For Research Use only

### Handling

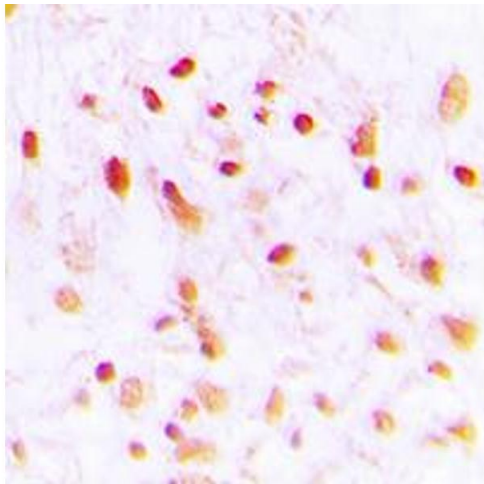
Format:	Liquid
Buffer:	Liquid in 0.42 % Potassium phosphate, 0.87 % Sodium chloride, pH 7.3, 30 % glycerol, and 0.01 % sodium azide.
Preservative:	Sodium azide
Precaution of Use:	This product contains Sodium azide: a POISONOUS AND HAZARDOUS SUBSTANCE which should be handled by trained staff only.
Storage:	-20 °C
Storage Comment:	Shipped at 4°C. Upon delivery aliquot and store at -20°C for one year. Avoid freeze/thaw cycles.
Expiry Date:	12 months

### Images



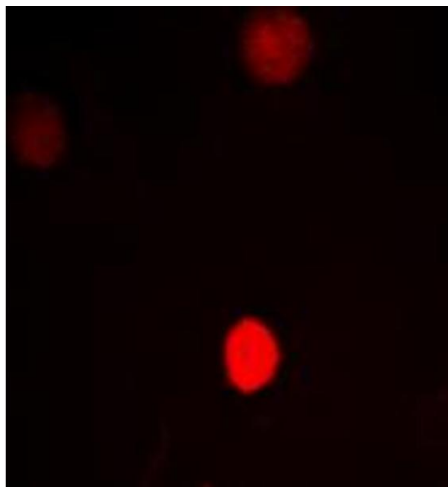
#### Western Blotting

**Image 1.** Western blot analysis of CTBP1 expression in SHSY5Y (A), A549 (B) whole cell lysates.



#### Immunohistochemistry

**Image 2.** Immunohistochemical analysis of CTBP1 staining in human lung cancer formalin fixed paraffin embedded tissue section. The section was pre-treated using heat mediated antigen retrieval with sodium citrate buffer (pH 6.0). The section was then incubated with the antibody at room temperature and detected using an HRP conjugated compact polymer system. DAB was used as the chromogen. The section was then counterstained with haematoxylin and mounted with DPX.



#### Immunofluorescence

**Image 3.** Immunofluorescent analysis of CTBP1 staining in HeLa cells. Formalin-fixed cells were permeabilized with 0.1% Triton X-100 in TBS for 5-10 minutes and blocked with 3% BSA-PBS for 30 minutes at room temperature. Cells were probed with the primary antibody in 3% BSA-PBS and incubated overnight at 4 °C in a humidified chamber. Cells were washed with PBST and incubated with a DyLight 594-conjugated secondary antibody (red) in PBS at room temperature in the dark. DAPI was used to stain the cell nuclei (blue).