



[Go to Product page](#)

Datasheet for ABIN7300598
anti-CYP2S1 antibody (Center)

3 Images

Overview

Quantity:	100 µL
Target:	CYP2S1
Binding Specificity:	Center
Reactivity:	Human
Host:	Rabbit
Clonality:	Polyclonal
Conjugate:	This CYP2S1 antibody is un-conjugated
Application:	Western Blotting (WB), Immunohistochemistry (IHC), Immunofluorescence (IF), Immunochromatography (IC)

Product Details

Immunogen:	KLH-conjugated synthetic peptide encompassing a sequence within the center region of human Cytochrome P450 2S1.
Specificity:	Recognizes endogenous levels of Cytochrome P450 2S1 protein.
Characteristics:	Rabbit polyclonal antibody to Cytochrome P450 2S1
Purification:	The antibody was purified by immunogen affinity chromatography.

Target Details

Target:	CYP2S1
Alternative Name:	Cytochrome P450 2S1 (CYP2S1 Products)

Target Details

Background: Cytochrome P450 2S1, CYP11S1

Gene ID: 29785

UniProt: [Q96SQ9](#)

Application Details

Application Notes: WB (1:500 - 1:1000), IH (1:100 - 1:200), IF/IC (1:100 - 1:500)

Restrictions: For Research Use only

Handling

Format: Liquid

Buffer: Liquid in 0.42 % Potassium phosphate, 0.87 % Sodium chloride, pH 7.3, 30 % glycerol, and 0.01 % sodium azide.

Preservative: Sodium azide

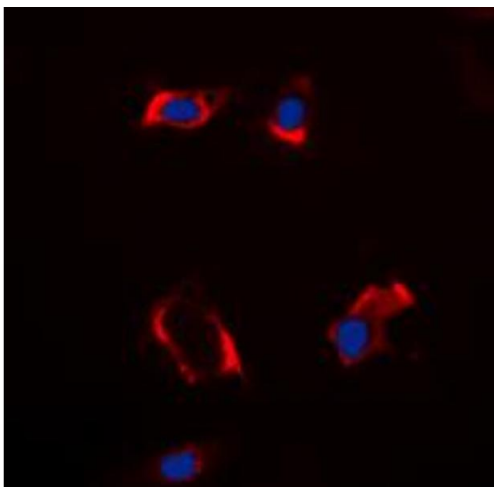
Precaution of Use: This product contains Sodium azide: a POISONOUS AND HAZARDOUS SUBSTANCE which should be handled by trained staff only.

Storage: -20 °C

Storage Comment: Shipped at 4°C. Upon delivery aliquot and store at -20°C for one year. Avoid freeze/thaw cycles.

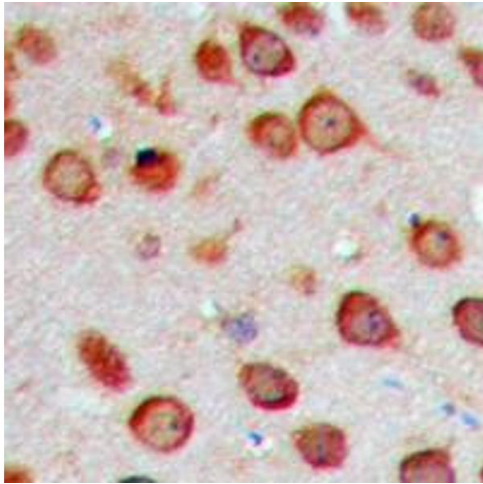
Expiry Date: 12 months

Images



Immunofluorescence

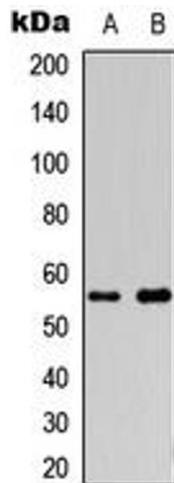
Image 1. Immunofluorescent analysis of Cytochrome P450 2S1 staining in HepG2 cells. Formalin-fixed cells were permeabilized with 0.1% Triton X-100 in TBS for 5-10 minutes and blocked with 3% BSA-PBS for 30 minutes at room temperature. Cells were probed with the primary antibody in 3% BSA-PBS and incubated overnight at 4 °C in a humidified chamber. Cells were washed with PBST and incubated with a DyLight 594-conjugated secondary antibody (red) in PBS at room temperature in the dark. DAPI



was used to stain the cell nuclei (blue).

Immunohistochemistry

Image 2. Immunohistochemical analysis of Cytochrome P450 2S1 staining in human brain formalin fixed paraffin embedded tissue section. The section was pre-treated using heat mediated antigen retrieval with sodium citrate buffer (pH 6.0). The section was then incubated with the antibody at room temperature and detected using an HRP conjugated compact polymer system. DAB was used as the chromogen. The section was then counterstained with haematoxylin and mounted with DPX.



Western Blotting

Image 3. Western blot analysis of Cytochrome P450 2S1 expression in HepG2 (A), COLO205 (B) whole cell lysates.