

Datasheet for ABIN7300632

anti-EEF2 antibody (N-Term, pSer56)**3** Images[Go to Product page](#)

Overview

Quantity:	100 µL
Target:	EEF2
Binding Specificity:	N-Term, pSer56
Reactivity:	Human, Mouse, Rat, Cow, Zebrafish (Danio rerio), Chicken, Monkey
Host:	Rabbit
Clonality:	Polyclonal
Conjugate:	This EEF2 antibody is un-conjugated
Application:	Western Blotting (WB), Immunohistochemistry (IHC), Immunofluorescence (IF), Immunochromatography (IC)

Product Details

Immunogen:	KLH-conjugated synthetic peptide encompassing a sequence within the N-term region of human EEF2 (pT56).
Specificity:	Recognizes endogenous levels of EEF2 (pT56) protein.
Characteristics:	Rabbit polyclonal antibody to EEF2 (pT56)
Purification:	The antibody was purified by immunogen affinity chromatography.

Target Details

Target:	EEF2
Alternative Name:	EEF2 (EEF2 Products)

Target Details

Background: EF2, Elongation factor 2, EF-2

Gene ID: 1938, 13629, 29565

UniProt: [P13639](#), [P58252](#), [P05197](#)

Pathways: [AMPK Signaling](#)

Application Details

Application Notes: WB (1:500 - 1:1000), IH (1:100 - 1:200), IF/IC (1:100 - 1:500)

Restrictions: For Research Use only

Handling

Format: Liquid

Buffer: Liquid in 0.42 % Potassium phosphate, 0.87 % Sodium chloride, pH 7.3, 30 % glycerol, and 0.01 % sodium azide.

Preservative: Sodium azide

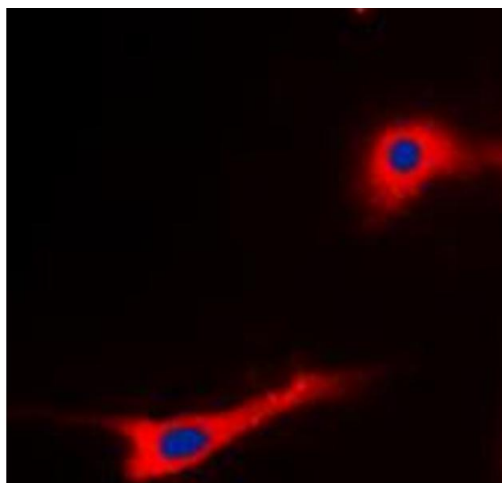
Precaution of Use: This product contains Sodium azide: a POISONOUS AND HAZARDOUS SUBSTANCE which should be handled by trained staff only.

Storage: -20 °C

Storage Comment: Shipped at 4°C. Upon delivery aliquot and store at -20°C for one year. Avoid freeze/thaw cycles.

Expiry Date: 12 months

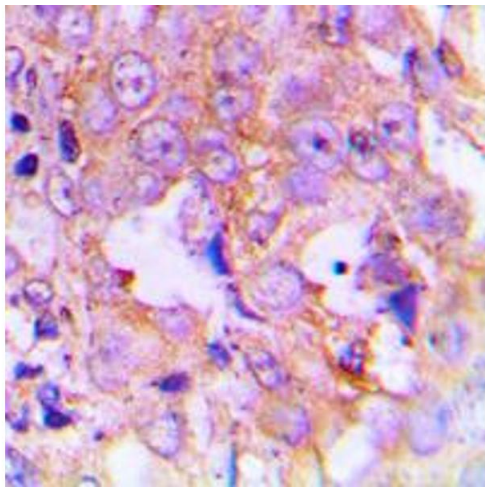
Images



Immunofluorescence

Image 1. Immunofluorescent analysis of EEF2 (pT56) staining in SKOV3 cells. Formalin-fixed cells were permeabilized with 0.1% Triton X-100 in TBS for 5-10 minutes and blocked with 3% BSA-PBS for 30 minutes at room temperature. Cells were probed with the primary antibody in 3% BSA-PBS and incubated overnight at 4 °C in a humidified chamber. Cells were washed with PBST and incubated with a DyLight 594-conjugated secondary

antibody (red) in PBS at room temperature in the dark. DAPI was used to stain the cell nuclei (blue).



Immunohistochemistry

Image 2. Immunohistochemical analysis of EEf2 (pT56) staining in human lung cancer formalin fixed paraffin embedded tissue section. The section was pre-treated using heat mediated antigen retrieval with sodium citrate buffer (pH 6.0). The section was then incubated with the antibody at room temperature and detected using an HRP conjugated compact polymer system. DAB was used as the chromogen. The section was then counterstained with haematoxylin and mounted with DPX.

Western Blotting

Image 3. Western blot analysis of EEf2 (pT56) expression in SKOV3 (A), NIH3T3 (B) whole cell lysates.

