

Datasheet for ABIN7300634  
**anti-Ephrin A5 antibody (Center)**

## 3 Images

[Go to Product page](#)

## Overview

Quantity:	100 µL
Target:	Ephrin A5 (EFNA5)
Binding Specificity:	Center
Reactivity:	Human, Rat, Mouse, Cow, Rabbit, Chicken
Host:	Rabbit
Clonality:	Polyclonal
Conjugate:	This Ephrin A5 antibody is un-conjugated
Application:	Western Blotting (WB), Immunohistochemistry (IHC), Immunofluorescence (IF), Flow Cytometry (FACS), Immunochromatography (IC)

## Product Details

Immunogen:	KLH-conjugated synthetic peptide encompassing a sequence within the center region of human Ephrin A5.
Specificity:	Recognizes endogenous levels of Ephrin A5 protein.
Characteristics:	Rabbit polyclonal antibody to Ephrin A5
Purification:	The antibody was purified by immunogen affinity chromatography.

## Target Details

Target:	Ephrin A5 (EFNA5)
Alternative Name:	Ephrin A5 ( <a href="#">EFNA5 Products</a> )

## Target Details

Background:	EPLG7, LERK7, Ephrin-A5, AL-1, EPH-related receptor tyrosine kinase ligand 7, LERK-7
Gene ID:	1946, 13640, 116683
UniProt:	<a href="#">P52803</a> , <a href="#">O08543</a> , <a href="#">P97605</a>
Pathways:	<a href="#">RTK Signaling</a>

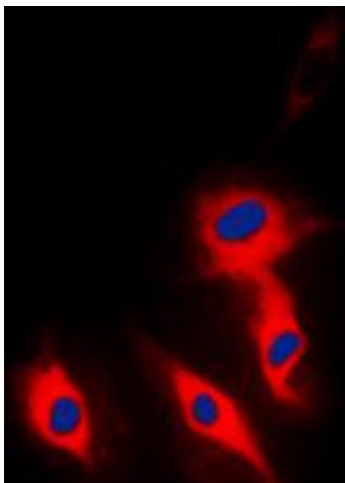
## Application Details

Application Notes:	WB (1:500 - 1:1000), IH (1:100 - 1:200), IF/IC (1:100 - 1:500), FC (1:100 - 1:200)
Restrictions:	For Research Use only

## Handling

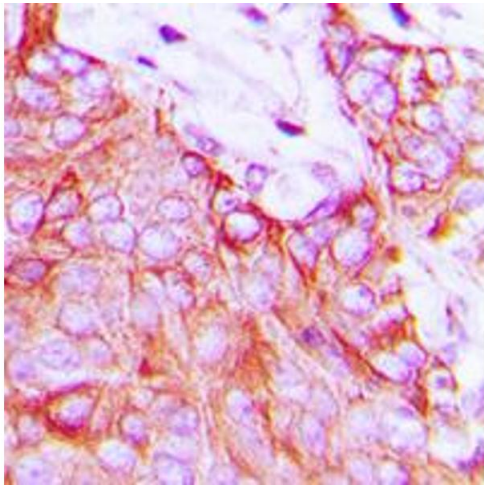
Format:	Liquid
Buffer:	Liquid in 0.42 % Potassium phosphate, 0.87 % Sodium chloride, pH 7.3, 30 % glycerol, and 0.01 % sodium azide.
Preservative:	Sodium azide
Precaution of Use:	This product contains Sodium azide: a POISONOUS AND HAZARDOUS SUBSTANCE which should be handled by trained staff only.
Storage:	-20 °C
Storage Comment:	Shipped at 4°C. Upon delivery aliquot and store at -20°C for one year. Avoid freeze/thaw cycles.
Expiry Date:	12 months

## Images



### Immunofluorescence

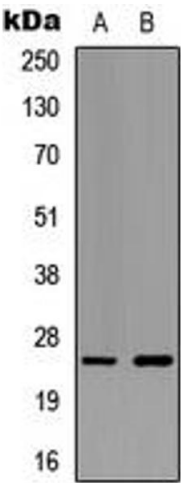
**Image 1.** Immunofluorescent analysis of Ephrin A5 staining in Hela cells. Formalin-fixed cells were permeabilized with 0.1% Triton X-100 in TBS for 5-10 minutes and blocked with 3% BSA-PBS for 30 minutes at room temperature. Cells were probed with the primary antibody in 3% BSA-PBS and incubated overnight at 4 °C in a humidified chamber. Cells were washed with PBST and incubated with a DyLight 594-conjugated secondary antibody (red) in PBS at room



temperature in the dark. DAPI was used to stain the cell nuclei (blue).

Immunohistochemistry

**Image 2.** Immunohistochemical analysis of Ephrin A5 staining in human breast cancer formalin fixed paraffin embedded tissue section. The section was pre-treated using heat mediated antigen retrieval with sodium citrate buffer (pH 6.0). The section was then incubated with the antibody at room temperature and detected using an HRP conjugated compact polymer system. DAB was used as the chromogen. The section was then counterstained with haematoxylin and mounted with DPX.



Western Blotting

**Image 3.** Western blot analysis of Ephrin A5 expression in HeLa (A), NIH3T3 (B) whole cell lysates.