

Datasheet for ABIN7300648
anti-EIF4G1 antibody (pSer1148)

2 Images

[Go to Product page](#)

Overview

Quantity:	100 µL
Target:	EIF4G1
Binding Specificity:	pSer1148
Reactivity:	Human, Mouse, Rat, Rabbit, Pig
Host:	Rabbit
Clonality:	Polyclonal
Conjugate:	This EIF4G1 antibody is un-conjugated
Application:	Immunohistochemistry (IHC), Western Blotting (WB)

Product Details

Immunogen:	KLH-conjugated synthetic peptide encompassing a sequence within the center region of human EIF4G1 (pS1148).
Specificity:	Recognizes endogenous levels of EIF4G1 (pS1148) protein.
Characteristics:	Rabbit polyclonal antibody to EIF4G1 (pS1148)
Purification:	The antibody was purified by immunogen affinity chromatography.

Target Details

Target:	EIF4G1
Alternative Name:	EIF4G1 (EIF4G1 Products)
Background:	EIF4F, EIF4G, EIF4GI, Eukaryotic translation initiation factor 4 gamma 1, eIF-4-gamma 1, eIF-4G

Target Details

	1, eIF-4G1, p220
Gene ID:	1981, 208643
UniProt:	Q04637 , Q6NZJ6

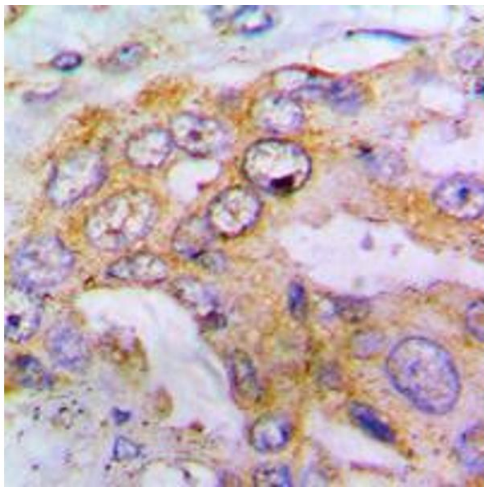
Application Details

Application Notes:	WB (1:500 - 1:1000), IH (1:100 - 1:200)
Restrictions:	For Research Use only

Handling

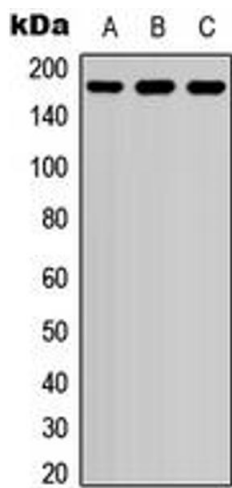
Format:	Liquid
Buffer:	Liquid in 0.42 % Potassium phosphate, 0.87 % Sodium chloride, pH 7.3, 30 % glycerol, and 0.01 % sodium azide.
Preservative:	Sodium azide
Precaution of Use:	This product contains Sodium azide: a POISONOUS AND HAZARDOUS SUBSTANCE which should be handled by trained staff only.
Storage:	-20 °C
Storage Comment:	Shipped at 4°C. Upon delivery aliquot and store at -20°C for one year. Avoid freeze/thaw cycles.
Expiry Date:	12 months

Images



Immunohistochemistry

Image 1. Immunohistochemical analysis of EIF4G1 (pS1148) staining in human lung cancer formalin fixed paraffin embedded tissue section. The section was pre-treated using heat mediated antigen retrieval with sodium citrate buffer (pH 6.0). The section was then incubated with the antibody at room temperature and detected using an HRP conjugated compact polymer system. DAB was used as the chromogen. The section was then counterstained with haematoxylin and mounted with DPX.



Western Blotting

Image 2. Western blot analysis of EIF4G1 (pS1148) expression in THP1 (A), Raw264.7 (B), PC12 (C) whole cell lysates.