



Datasheet for ABIN7300652  
**anti-EMR2 antibody (Center)**



[Go to Product page](#)

1 Image

Overview

Quantity:	100 µL
Target:	EMR2
Binding Specificity:	Center
Reactivity:	Human, Mouse, Dog, Rat
Host:	Rabbit
Clonality:	Polyclonal
Conjugate:	This EMR2 antibody is un-conjugated
Application:	Western Blotting (WB)

Product Details

Immunogen:	KLH-conjugated synthetic peptide encompassing a sequence within the center region of human EMR2.
Specificity:	Recognizes endogenous levels of EMR2 protein.
Characteristics:	Rabbit polyclonal antibody to EMR2
Purification:	The antibody was purified by immunogen affinity chromatography.

Target Details

Target:	EMR2
Alternative Name:	EMR2 ( <a href="#">EMR2 Products</a> )
Background:	EGF-like module-containing mucin-like hormone receptor-like 2, EGF-like module receptor 2,

## Target Details

CD312

Gene ID: 30817

UniProt: [Q9UHX3](#)

## Application Details

Application Notes: WB (1:500 - 1:1000)

Restrictions: For Research Use only

## Handling

Format: Liquid

Buffer: Liquid in 0.42 % Potassium phosphate, 0.87 % Sodium chloride, pH 7.3, 30 % glycerol, and 0.01 % sodium azide.

Preservative: Sodium azide

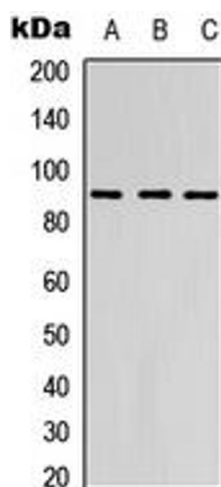
Precaution of Use: This product contains Sodium azide: a POISONOUS AND HAZARDOUS SUBSTANCE which should be handled by trained staff only.

Storage: -20 °C

Storage Comment: Shipped at 4°C. Upon delivery aliquot and store at -20°C for one year. Avoid freeze/thaw cycles.

Expiry Date: 12 months

## Images



### Western Blotting

**Image 1.** Western blot analysis of EMR2 expression in HEK293T (A), Raw264.7 (B), PC12 (C) whole cell lysates.