

Datasheet for ABIN7300670
anti-ERCC6 antibody (N-Term)[Go to Product page](#)

2 Images

Overview

Quantity:	100 µL
Target:	ERCC6
Binding Specificity:	N-Term
Reactivity:	Human, Rat, Mouse
Host:	Rabbit
Clonality:	Polyclonal
Conjugate:	This ERCC6 antibody is un-conjugated
Application:	Western Blotting (WB), Immunohistochemistry (IHC)

Product Details

Immunogen:	KLH-conjugated synthetic peptide encompassing a sequence within the N-term region of human ERCC6.
Specificity:	Recognizes endogenous levels of ERCC6 protein.
Characteristics:	Rabbit polyclonal antibody to ERCC6
Purification:	The antibody was purified by immunogen affinity chromatography.

Target Details

Target:	ERCC6
Alternative Name:	ERCC6 (ERCC6 Products)
Background:	CSB, DNA excision repair protein ERCC-6, ATP-dependent helicase ERCC6, Cockayne syndrome

Target Details

	protein CSB
Gene ID:	2074
UniProt:	Q03468
Pathways:	DNA Damage Repair , Chromatin Binding

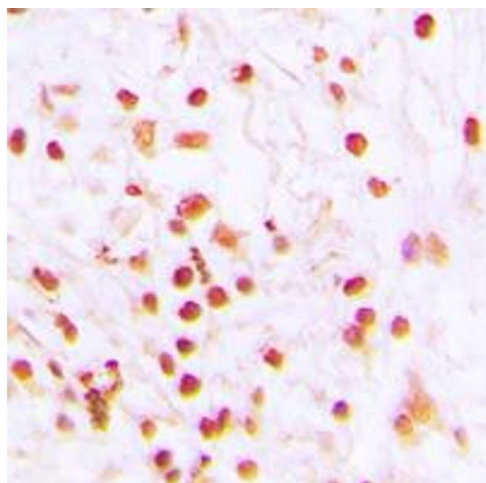
Application Details

Application Notes:	WB (1:500 - 1:1000), IH (1:100 - 1:200)
Restrictions:	For Research Use only

Handling

Format:	Liquid
Buffer:	Liquid in 0.42 % Potassium phosphate, 0.87 % Sodium chloride, pH 7.3, 30 % glycerol, and 0.01 % sodium azide.
Preservative:	Sodium azide
Precaution of Use:	This product contains Sodium azide: a POISONOUS AND HAZARDOUS SUBSTANCE which should be handled by trained staff only.
Storage:	-20 °C
Storage Comment:	Shipped at 4°C. Upon delivery aliquot and store at -20°C for one year. Avoid freeze/thaw cycles.
Expiry Date:	12 months

Images



Immunohistochemistry

Image 1. Immunohistochemical analysis of ERCC6 staining in human lung cancer formalin fixed paraffin embedded tissue section. The section was pre-treated using heat mediated antigen retrieval with sodium citrate buffer (pH 6.0). The section was then incubated with the antibody at room temperature and detected using an HRP conjugated compact polymer system. DAB was used as the chromogen. The section was then counterstained with

haematoxylin and mounted with DPX.

Western Blotting

Image 2. Western blot analysis of ERCC6 expression in HeLa (A), Raw264.7 (B), H9C2 (C) whole cell lysates.

