



Datasheet for ABIN7300678
anti-ETV4 antibody (Center)



[Go to Product page](#)

2 Images

Overview

Quantity:	100 µL
Target:	ETV4
Binding Specificity:	Center
Reactivity:	Human, Mouse, Rat, Dog
Host:	Rabbit
Clonality:	Polyclonal
Conjugate:	This ETV4 antibody is un-conjugated
Application:	Western Blotting (WB), Immunohistochemistry (IHC)

Product Details

Immunogen:	KLH-conjugated synthetic peptide encompassing a sequence within the center region of human ETV4.
Specificity:	Recognizes endogenous levels of ETV4 protein.
Characteristics:	Rabbit polyclonal antibody to ETV4
Purification:	The antibody was purified by immunogen affinity chromatography.

Target Details

Target:	ETV4
Alternative Name:	ETV4 (ETV4 Products)
Background:	E1AF, PEA3, ETS translocation variant 4, Adenovirus E1A enhancer-binding protein, E1A-F,

Target Details

Polyomavirus enhancer activator 3 homolog, Protein PEA3

Gene ID: 2118, 18612

UniProt: [P43268](#), [P28322](#)

Application Details

Application Notes: WB (1:500 - 1:1000), IH (1:100 - 1:200)

Restrictions: For Research Use only

Handling

Format: Liquid

Buffer: Liquid in 0.42 % Potassium phosphate, 0.87 % Sodium chloride, pH 7.3, 30 % glycerol, and 0.01 % sodium azide.

Preservative: Sodium azide

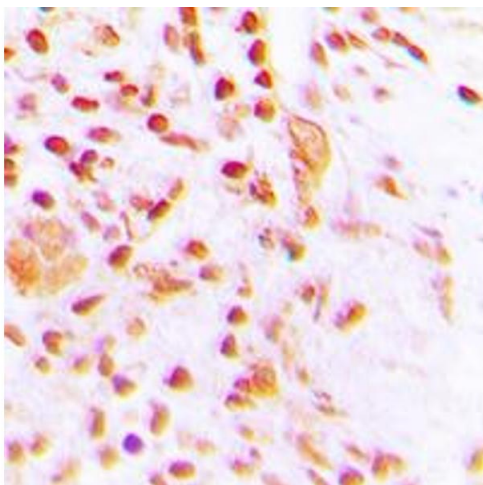
Precaution of Use: This product contains Sodium azide: a POISONOUS AND HAZARDOUS SUBSTANCE which should be handled by trained staff only.

Storage: -20 °C

Storage Comment: Shipped at 4°C. Upon delivery aliquot and store at -20°C for one year. Avoid freeze/thaw cycles.

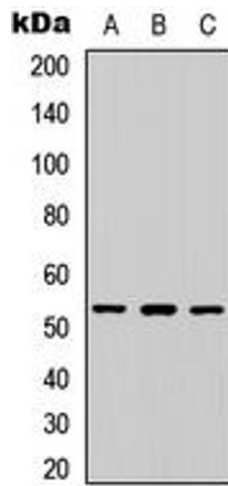
Expiry Date: 12 months

Images



Immunohistochemistry

Image 1. Immunohistochemical analysis of ETV4 staining in human lung cancer formalin fixed paraffin embedded tissue section. The section was pre-treated using heat mediated antigen retrieval with sodium citrate buffer (pH 6.0). The section was then incubated with the antibody at room temperature and detected using an HRP conjugated compact polymer system. DAB was used as the chromogen. The section was then counterstained with haematoxylin and mounted with DPX.



Western Blotting

Image 2. Western blot analysis of ETV4 expression in HeLa (A), Raw264.7 (B), PC12 (C) whole cell lysates.