

Datasheet for ABIN7300688
anti-FAM215A antibody (C-Term)[Go to Product page](#)

1 Image

Overview

Quantity:	100 µL
Target:	FAM215A
Binding Specificity:	C-Term
Reactivity:	Human, Mouse, Rat
Host:	Rabbit
Clonality:	Polyclonal
Conjugate:	This FAM215A antibody is un-conjugated
Application:	Western Blotting (WB)

Product Details

Immunogen:	KLH-conjugated synthetic peptide encompassing a sequence within the C-term region of human 42096.
Specificity:	Recognizes endogenous levels of 42096 protein.
Characteristics:	Rabbit polyclonal antibody to 42096
Purification:	The antibody was purified by immunogen affinity chromatography.

Target Details

Target:	FAM215A
Alternative Name:	APR2 (FAM215A Products)
Background:	APR2, C17orf88, Putative protein FAM215A, Putative apoptosis-related protein 2, APR-2

Target Details

Gene ID:	23591
UniProt:	Q9Y5M1

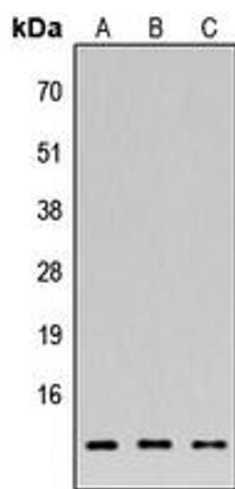
Application Details

Application Notes:	WB (1:500 - 1:1000)
Restrictions:	For Research Use only

Handling

Format:	Liquid
Buffer:	Liquid in 0.42 % Potassium phosphate, 0.87 % Sodium chloride, pH 7.3, 30 % glycerol, and 0.01 % sodium azide.
Preservative:	Sodium azide
Precaution of Use:	This product contains Sodium azide: a POISONOUS AND HAZARDOUS SUBSTANCE which should be handled by trained staff only.
Storage:	-20 °C
Storage Comment:	Shipped at 4°C. Upon delivery aliquot and store at -20°C for one year. Avoid freeze/thaw cycles.
Expiry Date:	12 months

Images



Western Blotting

Image 1. Western blot analysis of 42096 expression in HEK293T (A), NS-1 (B), H9C2 (C) whole cell lysates.