

Datasheet for ABIN7300716
anti-GABRB1 antibody (C-Term, pSer434)[Go to Product page](#)

3 Images

Overview

Quantity:	100 µL
Target:	GABRB1
Binding Specificity:	C-Term, pSer434
Reactivity:	Human, Mouse, Rat, Cow
Host:	Rabbit
Clonality:	Polyclonal
Conjugate:	This GABRB1 antibody is un-conjugated
Application:	Western Blotting (WB), Immunohistochemistry (IHC), Immunofluorescence (IF), Immunochromatography (IC)

Product Details

Immunogen:	KLH-conjugated synthetic peptide encompassing a sequence within the C-term region of human GABRB1 (pS434).
Specificity:	Recognizes endogenous levels of GABRB1 (pS434) protein.
Characteristics:	Rabbit polyclonal antibody to GABRB1 (pS434)
Purification:	The antibody was purified by immunogen affinity chromatography.

Target Details

Target:	GABRB1
Alternative Name:	GABRB1 (GABRB1 Products)

Target Details

Background:	Gamma-aminobutyric acid receptor subunit beta-1, GABA(A) receptor subunit beta-1
Gene ID:	2560, 14400, 25450
UniProt:	P18505 , P50571 , P15431

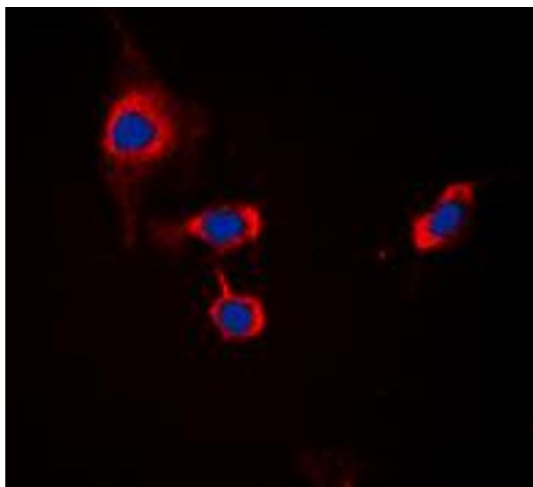
Application Details

Application Notes:	WB (1:500 - 1:1000), IH (1:100 - 1:200), IF/IC (1:100 - 1:500)
Restrictions:	For Research Use only

Handling

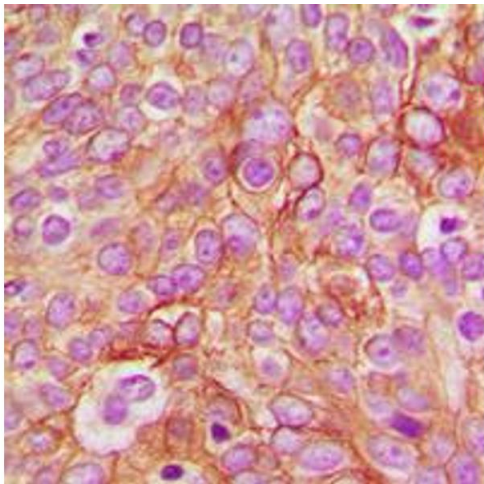
Format:	Liquid
Buffer:	Liquid in 0.42 % Potassium phosphate, 0.87 % Sodium chloride, pH 7.3, 30 % glycerol, and 0.01 % sodium azide.
Preservative:	Sodium azide
Precaution of Use:	This product contains Sodium azide: a POISONOUS AND HAZARDOUS SUBSTANCE which should be handled by trained staff only.
Storage:	-20 °C
Storage Comment:	Shipped at 4°C. Upon delivery aliquot and store at -20°C for one year. Avoid freeze/thaw cycles.
Expiry Date:	12 months

Images



Immunofluorescence

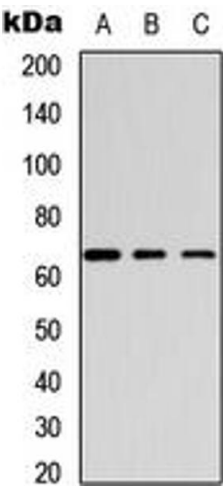
Image 1. Immunofluorescent analysis of GABRB1 (pS434) staining in MCF7 cells. Formalin-fixed cells were permeabilized with 0.1% Triton X-100 in TBS for 5-10 minutes and blocked with 3% BSA-PBS for 30 minutes at room temperature. Cells were probed with the primary antibody in 3% BSA-PBS and incubated overnight at 4 °C in a humidified chamber. Cells were washed with PBST and incubated with a DyLight 594-conjugated secondary antibody (red) in PBS at room temperature in the dark. DAPI



was used to stain the cell nuclei (blue).

Immunohistochemistry

Image 2. Immunohistochemical analysis of GABRB1 (pS434) staining in human breast cancer formalin fixed paraffin embedded tissue section. The section was pre-treated using heat mediated antigen retrieval with sodium citrate buffer (pH 6.0). The section was then incubated with the antibody at room temperature and detected using an HRP conjugad compact polymer system. DAB was used as the chromogen. The section was then counterstained with haematoxylin and mounted with DPX.



Western Blotting

Image 3. Western blot analysis of GABRB1 (pS434) expression in HeLa (A), mouse brain (B), rat brain (C) whole cell lysates.