

Datasheet for ABIN7300744
anti-GLP1R antibody (Center)

3 Images

[Go to Product page](#)

Overview

Quantity:	100 µL
Target:	GLP1R
Binding Specificity:	Center
Reactivity:	Human
Host:	Rabbit
Clonality:	Polyclonal
Conjugate:	This GLP1R antibody is un-conjugated
Application:	Western Blotting (WB), Immunohistochemistry (IHC), Immunofluorescence (IF), Immunochromatography (IC)

Product Details

Immunogen:	KLH-conjugated synthetic peptide encompassing a sequence within the center region of human GLP-1 Receptor.
Specificity:	Recognizes endogenous levels of GLP-1 Receptor protein.
Characteristics:	Rabbit polyclonal antibody to GLP-1 Receptor
Purification:	The antibody was purified by immunogen affinity chromatography.

Target Details

Target:	GLP1R
Alternative Name:	GLP-1 Receptor (GLP1R Products)

Target Details

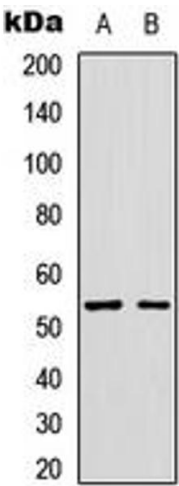
Background:	Glucagon-like peptide 1 receptor, GLP-1 receptor, GLP-1-R, GLP-1R
Gene ID:	2740
UniProt:	P43220
Pathways:	Positive Regulation of Peptide Hormone Secretion , Hormone Transport , cAMP Metabolic Process , Feeding Behaviour

Application Details

Application Notes:	WB (1:500 - 1:1000), IH (1:100 - 1:200), IF/IC (1:100 - 1:500)
Restrictions:	For Research Use only

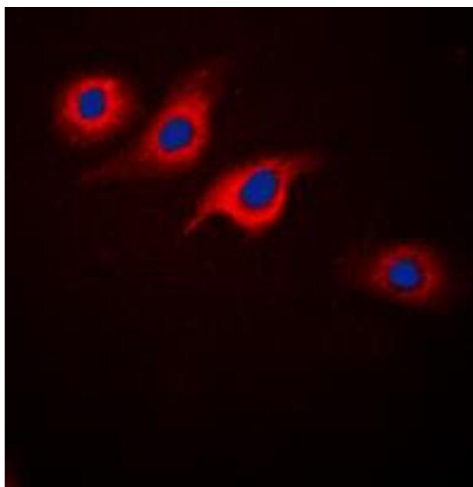
Handling

Format:	Liquid
Buffer:	Liquid in 0.42 % Potassium phosphate, 0.87 % Sodium chloride, pH 7.3, 30 % glycerol, and 0.01 % sodium azide.
Preservative:	Sodium azide
Precaution of Use:	This product contains Sodium azide: a POISONOUS AND HAZARDOUS SUBSTANCE which should be handled by trained staff only.
Storage:	-20 °C
Storage Comment:	Shipped at 4°C. Upon delivery aliquot and store at -20°C for one year. Avoid freeze/thaw cycles.
Expiry Date:	12 months



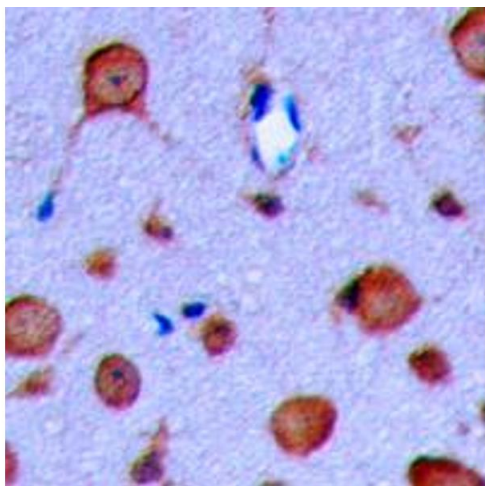
Western Blotting

Image 1. Western blot analysis of GLP-1 Receptor expression in SKNSH (A), HuvEc (B) whole cell lysates.



Immunofluorescence

Image 2. Immunofluorescent analysis of GLP-1 Receptor staining in SKNSH cells. Formalin-fixed cells were permeabilized with 0.1% Triton X-100 in TBS for 5-10 minutes and blocked with 3% BSA-PBS for 30 minutes at room temperature. Cells were probed with the primary antibody in 3% BSA-PBS and incubated overnight at 4 °C in a humidified chamber. Cells were washed with PBST and incubated with a DyLight 594-conjugated secondary antibody (red) in PBS at room temperature in the dark. DAPI was used to stain the cell nuclei (blue).



Immunohistochemistry

Image 3. Immunohistochemical analysis of GLP-1 Receptor staining in human brain formalin fixed paraffin embedded tissue section. The section was pre-treated using heat mediated antigen retrieval with sodium citrate buffer (pH 6.0). The section was then incubated with the antibody at room temperature and detected using an HRP conjugated compact polymer system. DAB was used as the chromogen. The section was then counterstained with haematoxylin and mounted with DPX.