

Datasheet for ABIN7300752
anti-GNL3L antibody (Center)[Go to Product page](#)

2 Images

Overview

Quantity:	100 µL
Target:	GNL3L
Binding Specificity:	Center
Reactivity:	Human, Mouse, Cow
Host:	Rabbit
Clonality:	Polyclonal
Conjugate:	This GNL3L antibody is un-conjugated
Application:	Western Blotting (WB), Immunohistochemistry (IHC)

Product Details

Immunogen:	KLH-conjugated synthetic peptide encompassing a sequence within the center region of human GNL3L.
Specificity:	Recognizes endogenous levels of GNL3L protein.
Characteristics:	Rabbit polyclonal antibody to GNL3L
Purification:	The antibody was purified by immunogen affinity chromatography.

Target Details

Target:	GNL3L
Alternative Name:	GNL3L (GNL3L Products)
Background:	Guanine nucleotide-binding protein-like 3-like protein

Target Details

Gene ID:	54552, 237107
UniProt:	Q9NVN8 , Q6PGG6

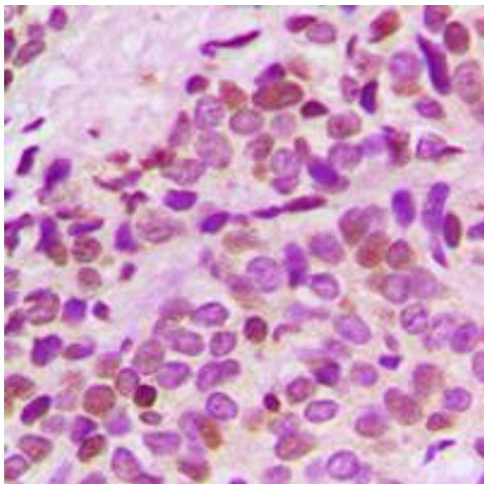
Application Details

Application Notes:	WB (1:500 - 1:1000), IH (1:100 - 1:200)
Restrictions:	For Research Use only

Handling

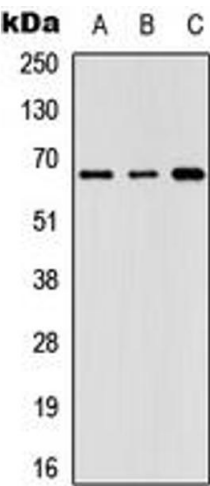
Format:	Liquid
Buffer:	Liquid in 0.42 % Potassium phosphate, 0.87 % Sodium chloride, pH 7.3, 30 % glycerol, and 0.01 % sodium azide.
Preservative:	Sodium azide
Precaution of Use:	This product contains Sodium azide: a POISONOUS AND HAZARDOUS SUBSTANCE which should be handled by trained staff only.
Storage:	-20 °C
Storage Comment:	Shipped at 4°C. Upon delivery aliquot and store at -20°C for one year. Avoid freeze/thaw cycles.
Expiry Date:	12 months

Images



Immunohistochemistry

Image 1. Immunohistochemical analysis of GNL3L staining in human breast cancer formalin fixed paraffin embedded tissue section. The section was pre-treated using heat mediated antigen retrieval with sodium citrate buffer (pH 6.0). The section was then incubated with the antibody at room temperature and detected using an HRP conjugad compact polymer system. DAB was used as the chromogen. The section was then counterstained with haematoxylin and mounted with DPX.



Western Blotting

Image 2. Western blot analysis of GNL3L expression in Lovo (A), HeLa (B), NIH3T3 (C) whole cell lysates.