



[Go to Product page](#)

Datasheet for ABIN7300778

## anti-Glycogen Synthase 1 antibody (C-Term, pSer645)

### 2 Images

#### Overview

Quantity:	100 µL
Target:	Glycogen Synthase 1 (GYS1)
Binding Specificity:	C-Term, pSer645
Reactivity:	Human, Mouse, Rat, Cow, Rabbit, Pig
Host:	Rabbit
Clonality:	Polyclonal
Conjugate:	This Glycogen Synthase 1 antibody is un-conjugated
Application:	Western Blotting (WB), Immunohistochemistry (IHC)

#### Product Details

Immunogen:	KLH-conjugated synthetic peptide encompassing a sequence within the C-term region of human GYS1 (pS645).
Specificity:	Recognizes endogenous levels of GYS1 (pS645) protein.
Characteristics:	Rabbit polyclonal antibody to GYS1 (pS645)
Purification:	The antibody was purified by immunogen affinity chromatography.

#### Target Details

Target:	Glycogen Synthase 1 (GYS1)
Alternative Name:	GYS1 ( <a href="#">GYS1 Products</a> )
Background:	GYS, Glycogen [starch] synthase, muscle

## Target Details

Gene ID:	2997, 14936, 690987
UniProt:	<a href="#">P13807</a> , <a href="#">Q9Z1E4</a> , <a href="#">A2RRU1</a>
Pathways:	<a href="#">PI3K-Akt Signaling</a> , <a href="#">AMPK Signaling</a> , <a href="#">Cellular Glucan Metabolic Process</a>

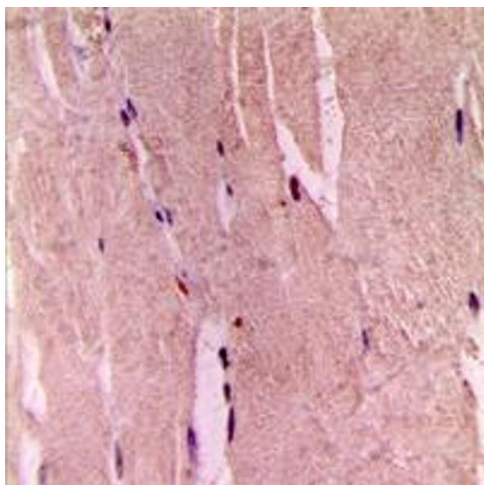
## Application Details

Application Notes:	WB (1:500 - 1:1000), IH (1:100 - 1:200)
Restrictions:	For Research Use only

## Handling

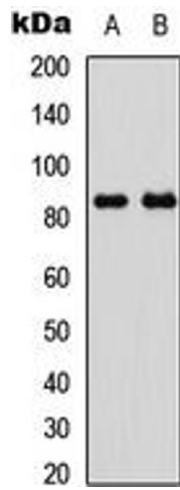
Format:	Liquid
Buffer:	Liquid in 0.42 % Potassium phosphate, 0.87 % Sodium chloride, pH 7.3, 30 % glycerol, and 0.01 % sodium azide.
Preservative:	Sodium azide
Precaution of Use:	This product contains Sodium azide: a POISONOUS AND HAZARDOUS SUBSTANCE which should be handled by trained staff only.
Storage:	-20 °C
Storage Comment:	Shipped at 4°C. Upon delivery aliquot and store at -20°C for one year. Avoid freeze/thaw cycles.
Expiry Date:	12 months

## Images



### Immunohistochemistry

**Image 1.** Immunohistochemical analysis of GYS1 (pS645) staining in human skeletal muscle formalin fixed paraffin embedded tissue section. The section was pre-treated using heat mediated antigen retrieval with sodium citrate buffer (pH 6.0). The section was then incubated with the antibody at room temperature and detected using an HRP conjugated compact polymer system. DAB was used as the chromogen. The section was then counterstained with haematoxylin and mounted with DPX.



### Western Blotting

**Image 2.** Western blot analysis of GYS1 (pS645) expression in HeLa insulin-treated (A), NIH3T3 insulin-treated (B) whole cell lysates.